

8-30 km

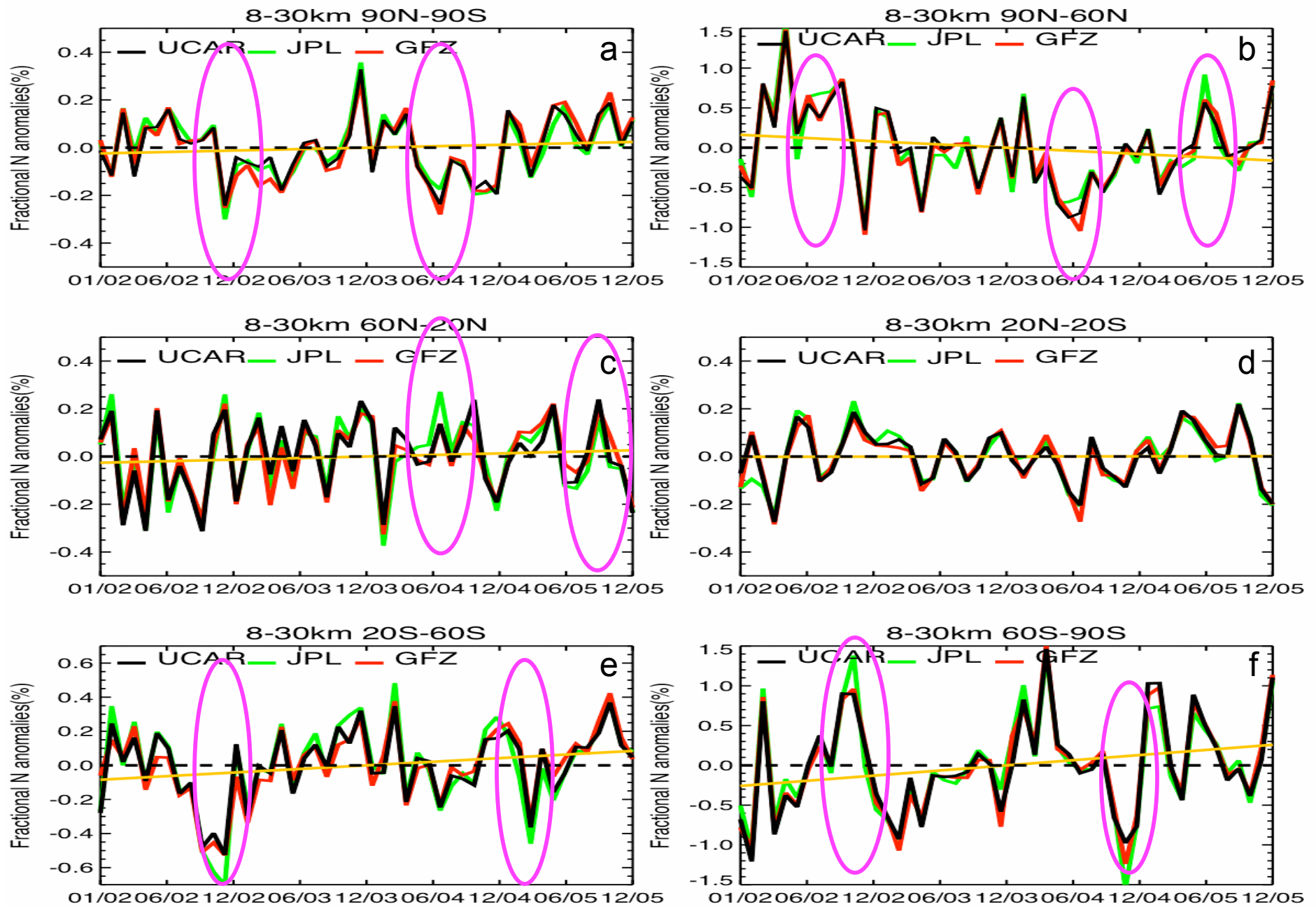


Fig. 1

8-30 km

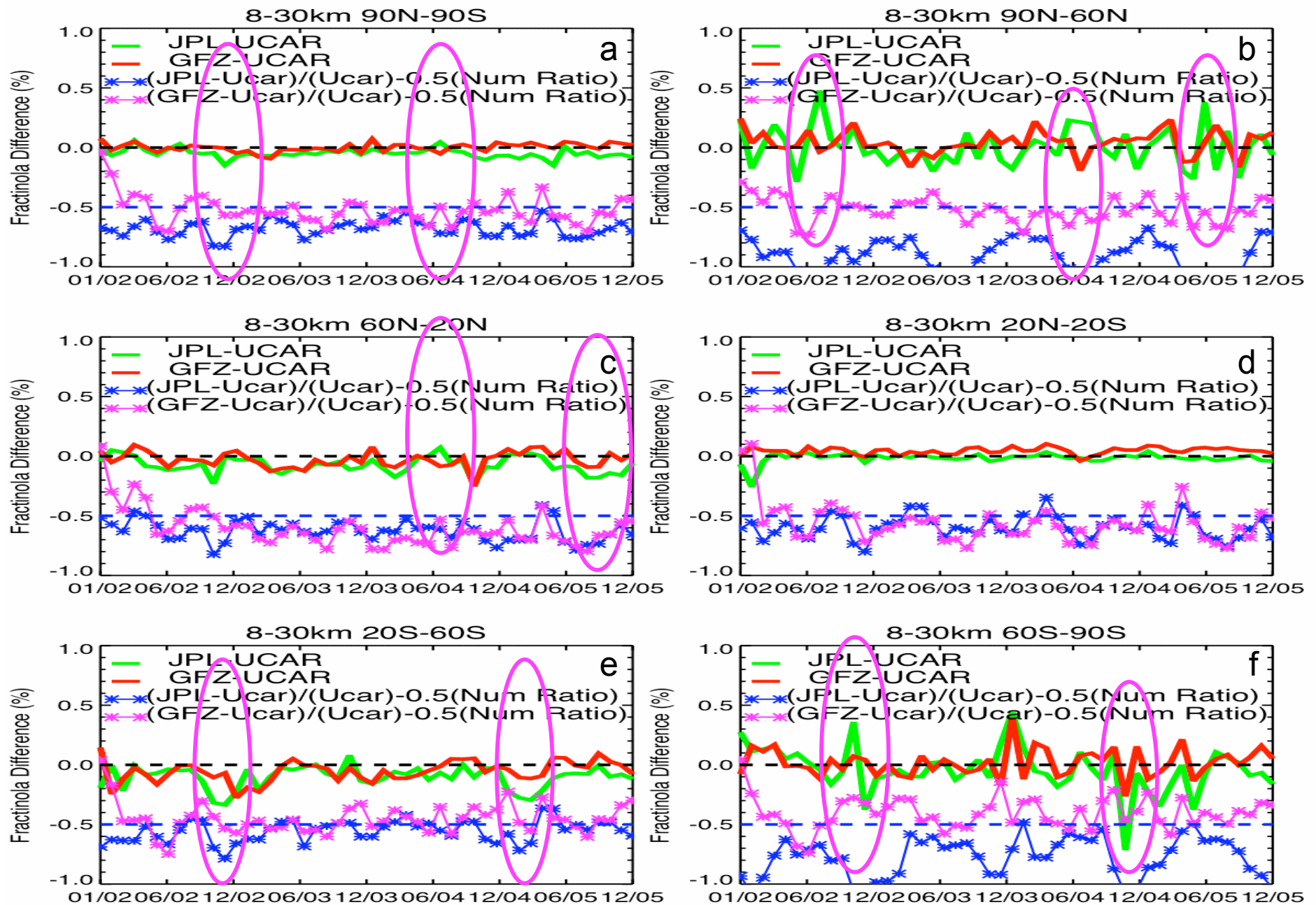


Fig. 2

8-12 km

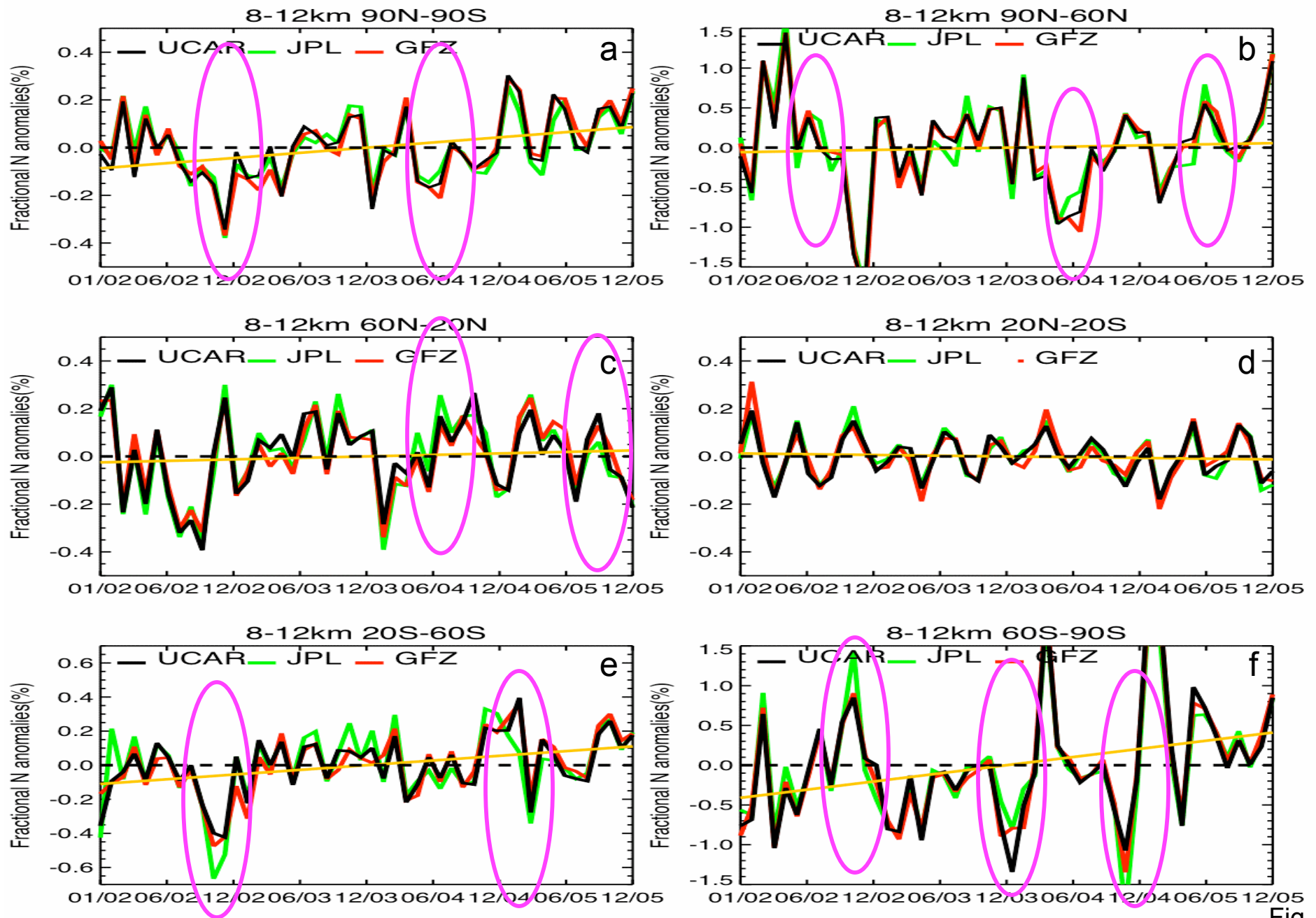


Fig. 3

8-12 km

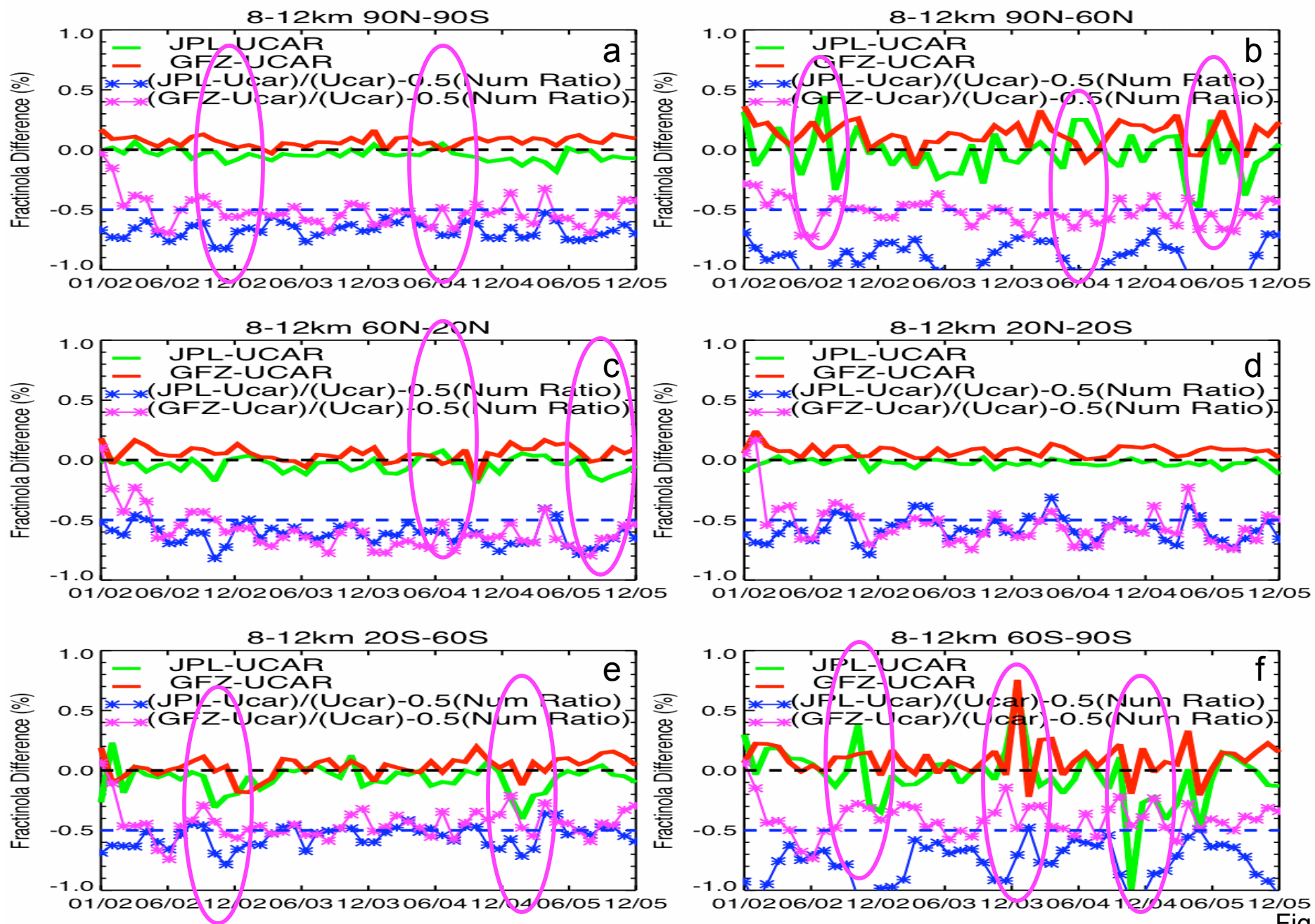


Fig. 4

12-20 km

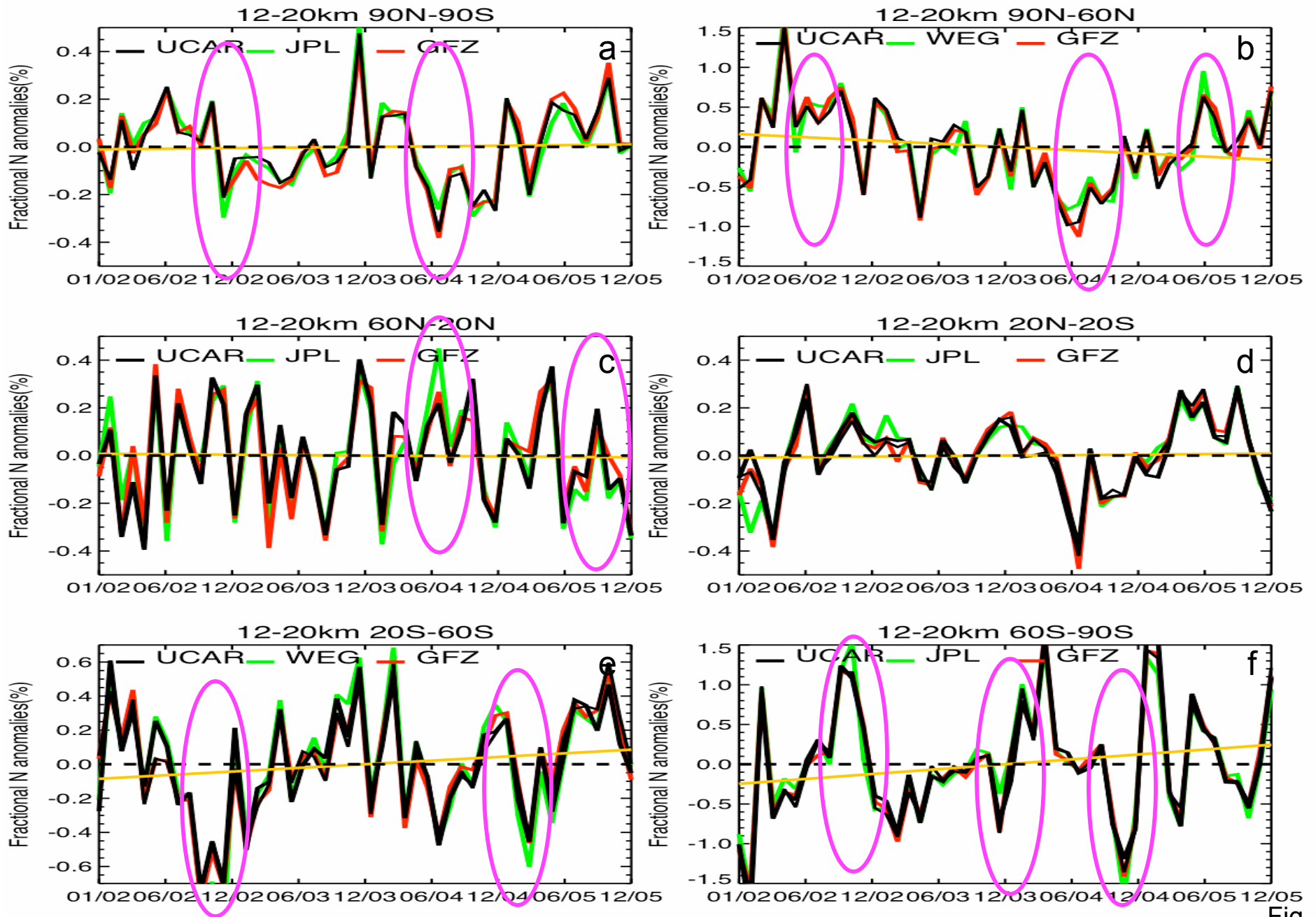


Fig. 5

12-20 km

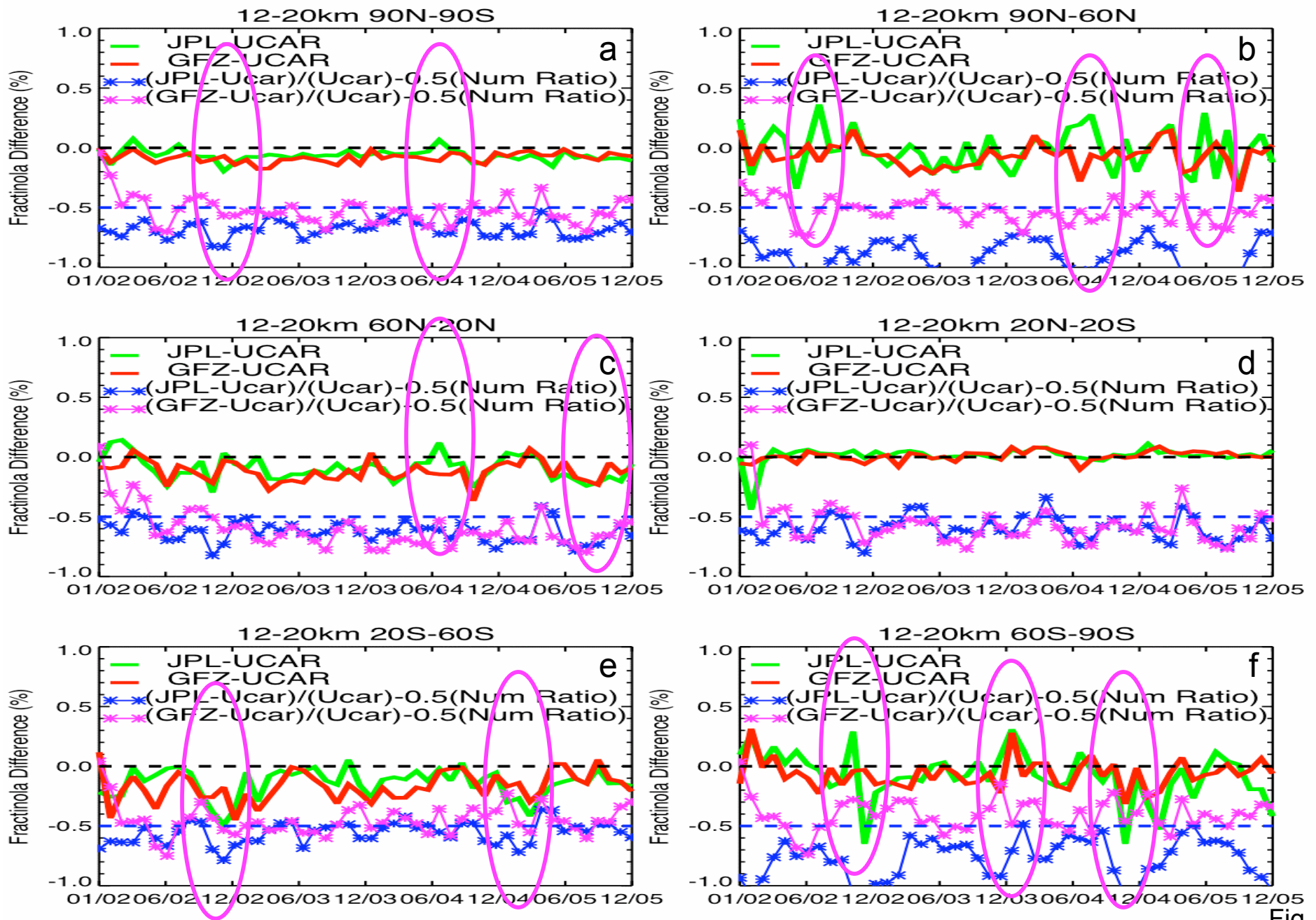


Fig. 6

20-30 km

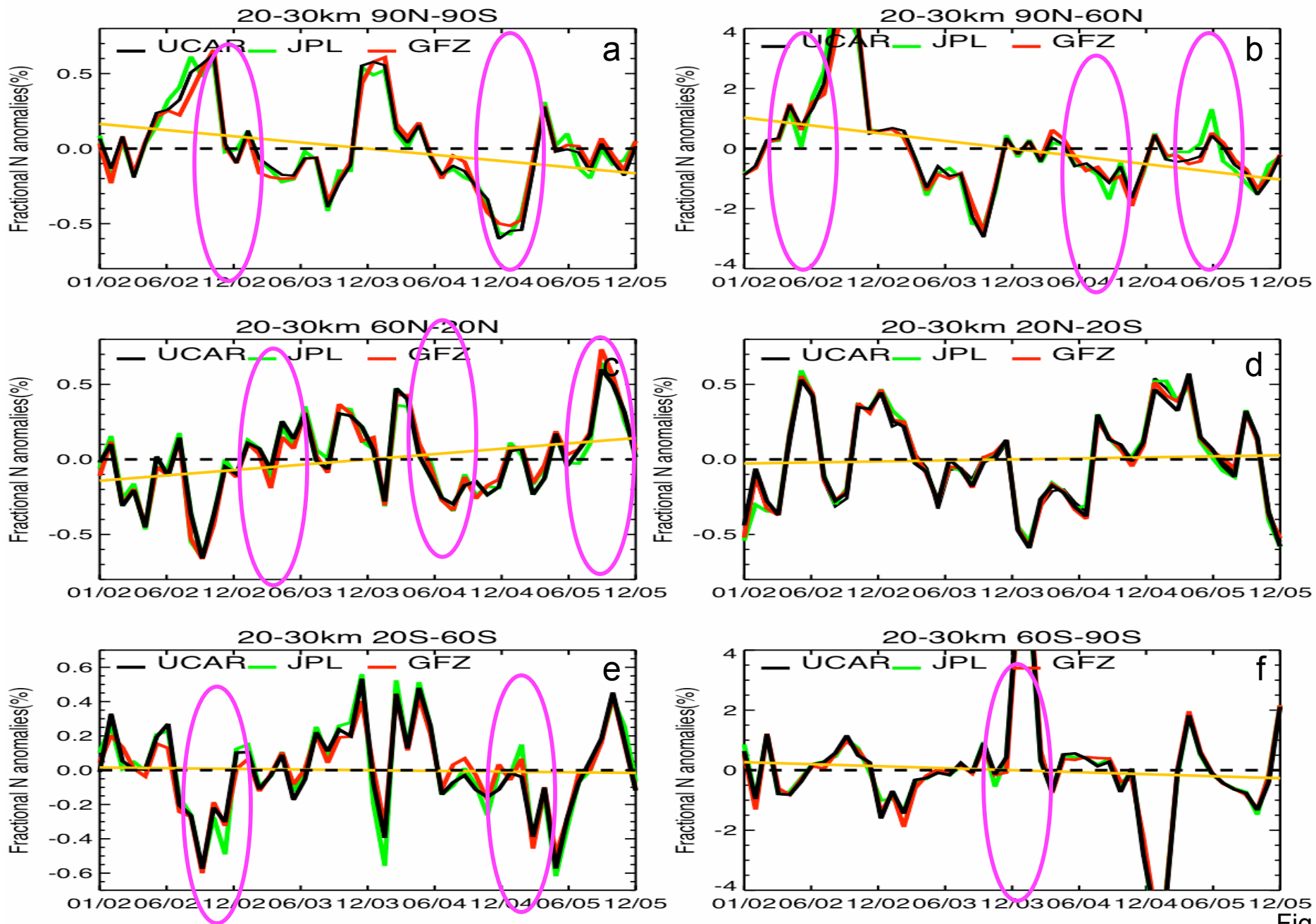


Fig. 7

20-30 km

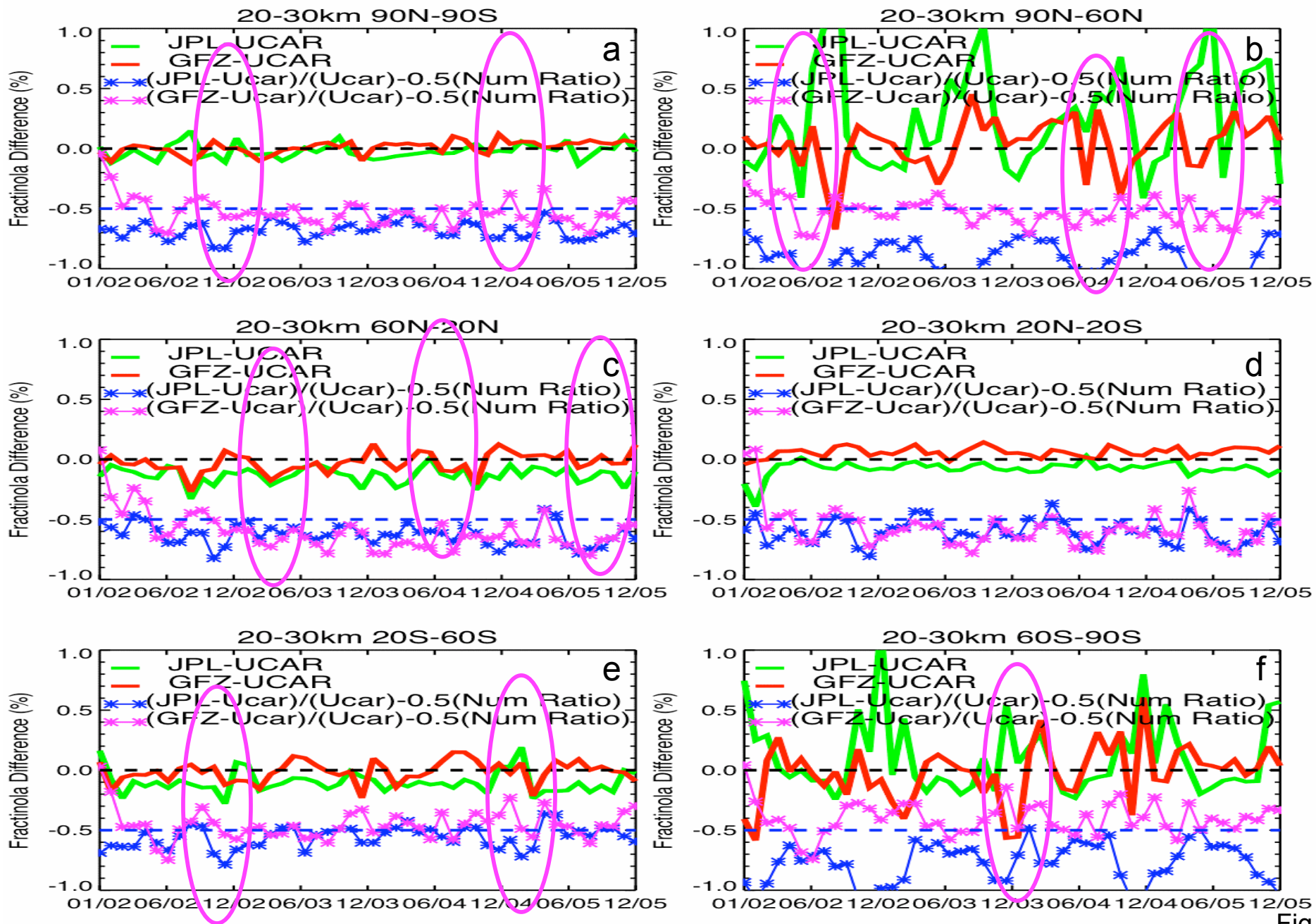


Fig. 8

The uncertainty of the trend of fractional N anomalies is within +/-0.04 %/5 yrs (+/-0.06K/5 yrs).

Fractional Anomalies (%)		UCAR	JPL	GFZ
90°N-90° S	8-30 Km	0.06	0.018 (-0.04)	0.1(0.04)
	8-12km	0.22	0.15(-0.07)	0.24(0.02)
	12-20Km	0.03	-0.013(-0.043)	0.07(0.04)
	20-30km	-0.42	-0.39(0.03)	-0.3(0.12)
60°N - 90° N	8-30 Km	-0.4	-0.47(0.06)	-0.41(-0.01)
	8-12 Km	0.15	0.03(-0.12)	0.1(-0.05)
	12-20Km	-0.41	-0.47(-0.06)	-0.44(-0.03)
	20-30km	-2.6	-2.5(0.01)	-2.4(0.02)
20° N - 60° N	8-30 Km	0.07	0.04(0.02)	0.09(0.02)
	8-12 Km	0.06	0.069(0.009)	0.073(0.013)
	12-20Km	-0.02	-0.09(-0.07)	-0.007(0.01)
	20-30km	0.36	0.38(0.02)	0.49(0.13)
20° N - 20° S	8-30 Km	0.003	0.022(0.02)	0.033(0.03)
	8-12 Km	-0.03	-0.06(-0.03)	-0.04(-0.01)
	12-20Km	0.022	0.086(0.06)	0.095(0.07)
	20-30km	0.07	0.097(0.03)	0.094(0.02)
20° S - 60° S	8-30 Km	0.22	0.2(0.0)	0.3(0.1)
	8-12 Km	0.28	0.25(-0.03)	0.36(0.08)
	12-20Km	0.22	0.21(0.01)	0.33(0.11)
	20-30km	-0.04	-0.03(0.01)	0.02(0.06)
60°S - 90° S	8-30 Km	0.66	0.44(-0.22)	0.7(0.04)
	8-12 Km	1.05	0.77(-0.28)	1.07(0.02)
	12-20Km	0.63	0.4(-0.23)	0.63(0.0)
	20-30km	-0.68	-0.7(-0.02)	-0.43(0.25)