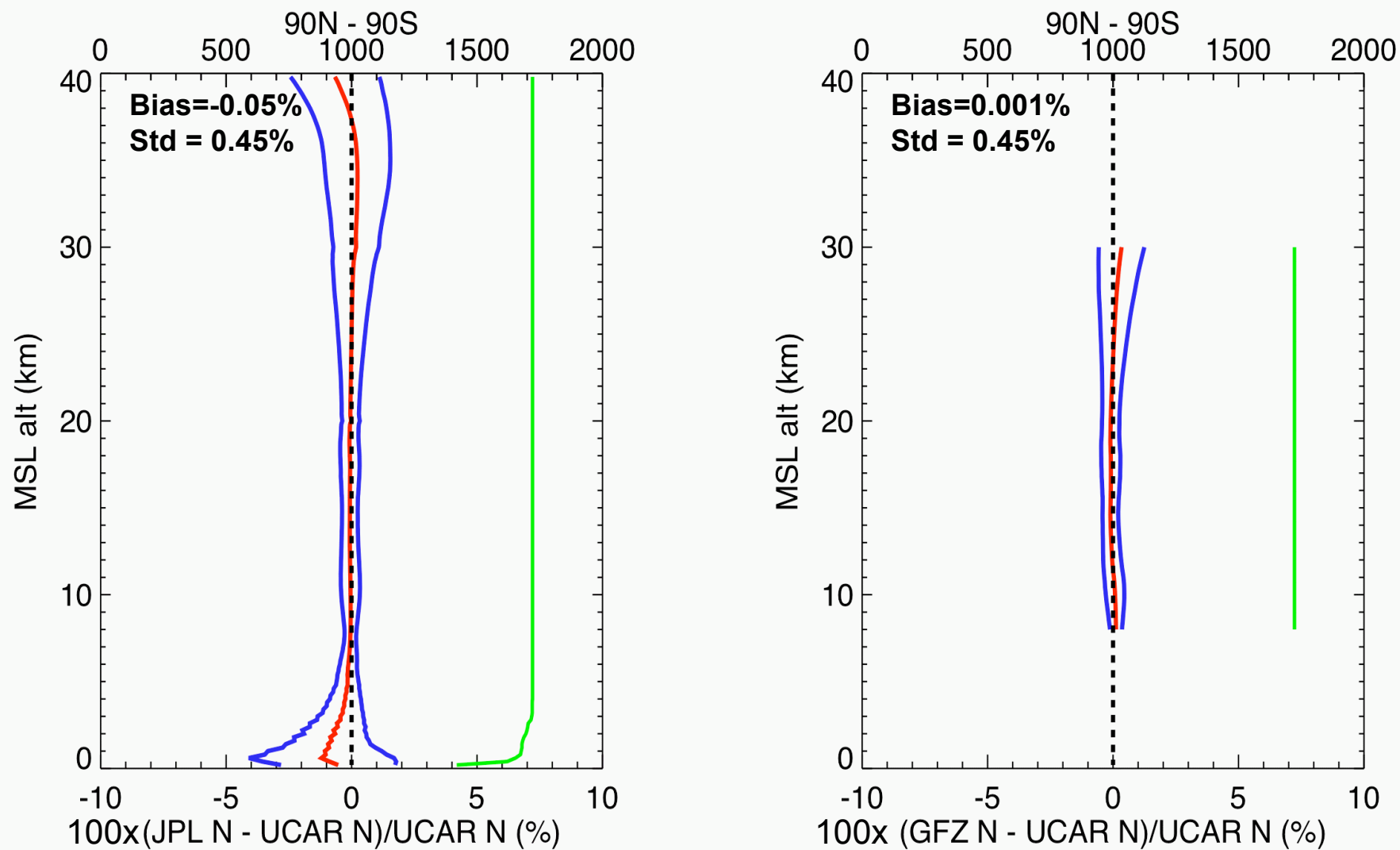


Monthly, 5 deg-lat, 200-meter mean refractivity profiles from 200201-200512



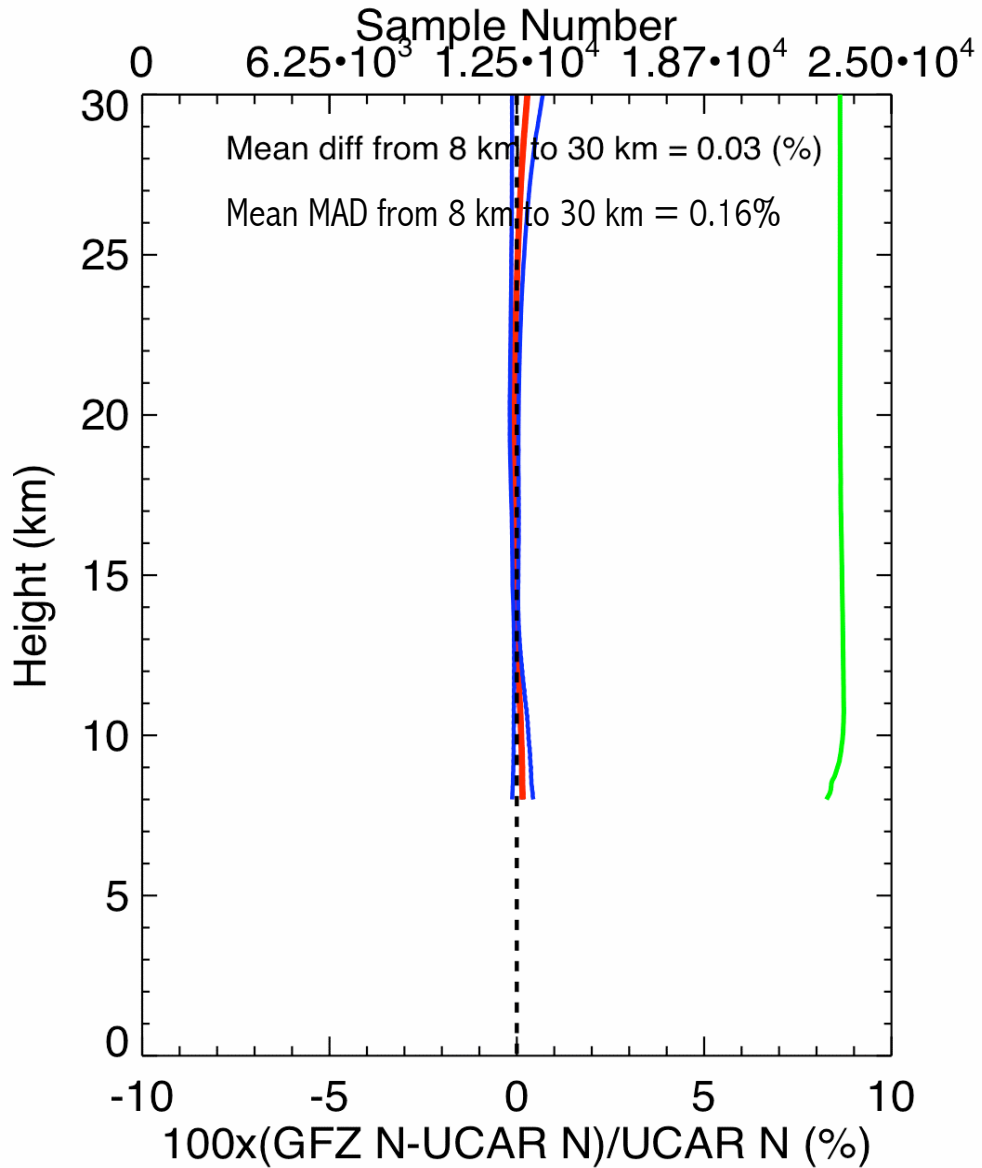
Bias and std from 30km to 8 km

Fig. 1

Copy right © UCAR, all rights reserved

Shu-peng Ben Ho, UCAR/COSMIC

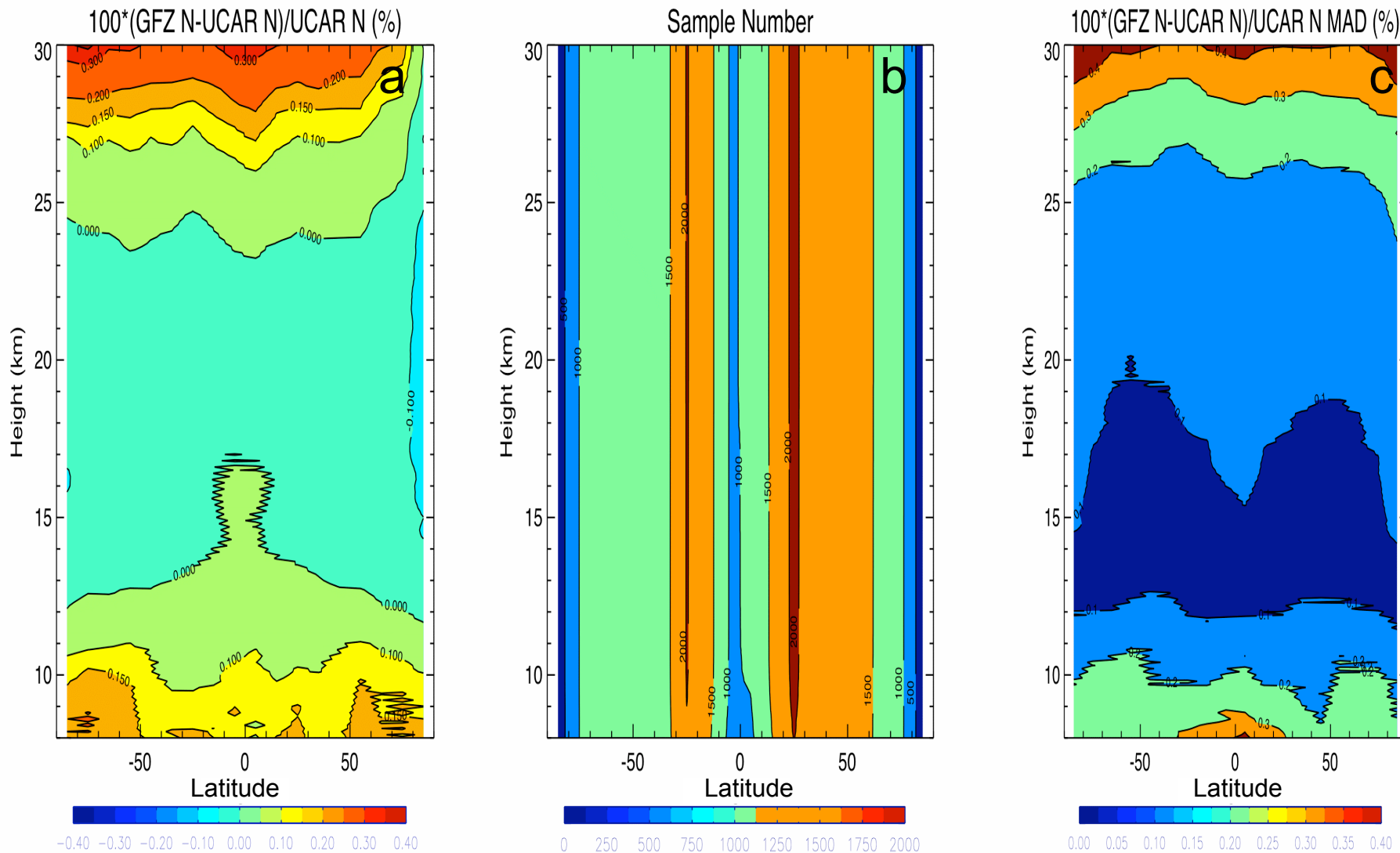
200601-12



Bias and MAD from 30km to 8 km

Fig. 2

Global mean $100 \cdot (\text{GFZ N} - \text{UCAR N}) / \text{UCAR N}$ (%)



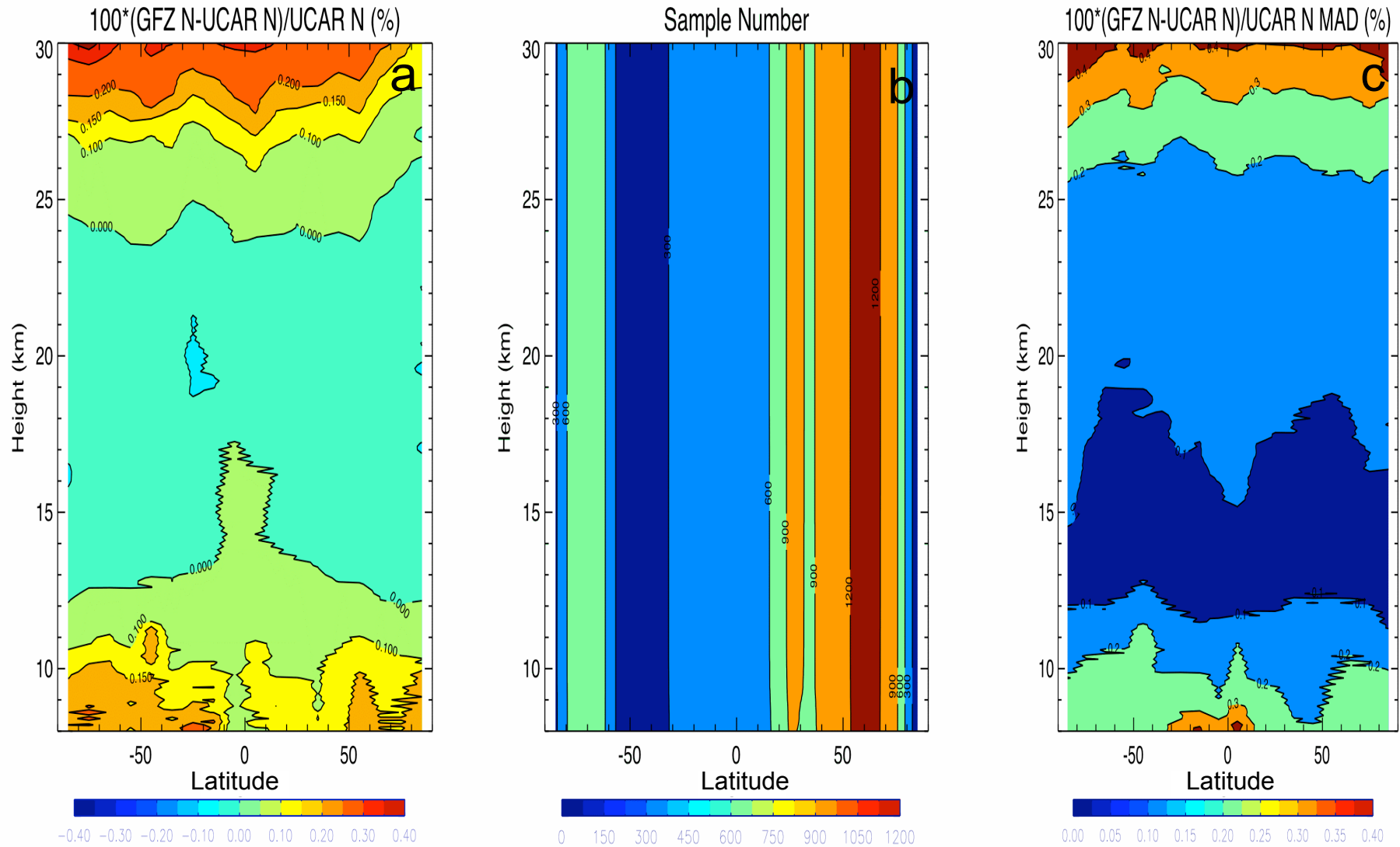
Fractional N (%)

Sample Numbers

MAD (%)

Fig. 3

Mean $100 \cdot (\text{GFZ N} - \text{UCAR N}) / \text{UCAR N}$ over lands (%)



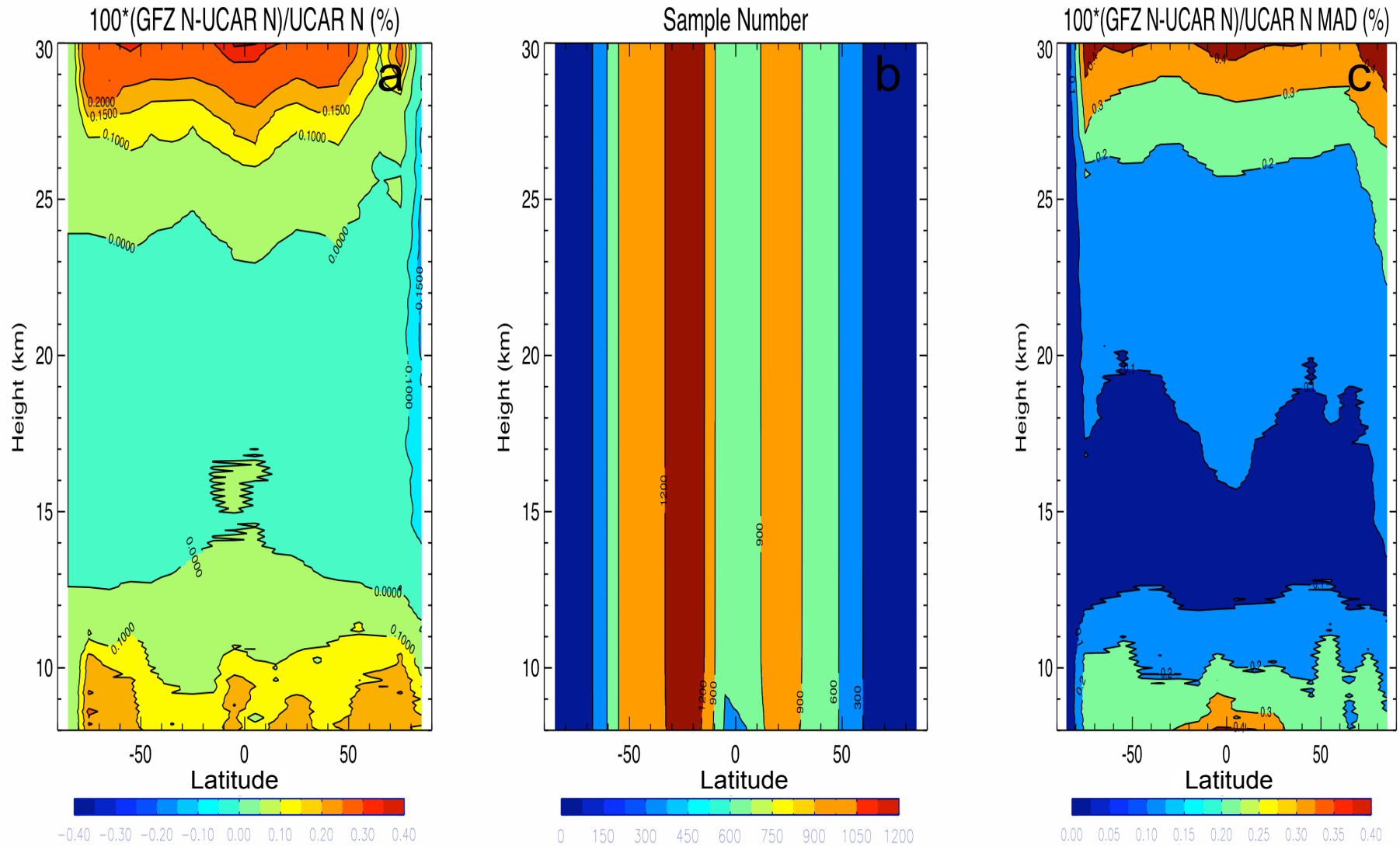
Fractional N (%)

Sample
Numbers

MAD (%)

Fig. 4

Mean $100 \cdot (\text{GFZ N} - \text{UCAR N}) / \text{UCAR N}$ over oceans (%)



Fractional N (%)

Sample
Numbers

MAD (%)

Fig. 5

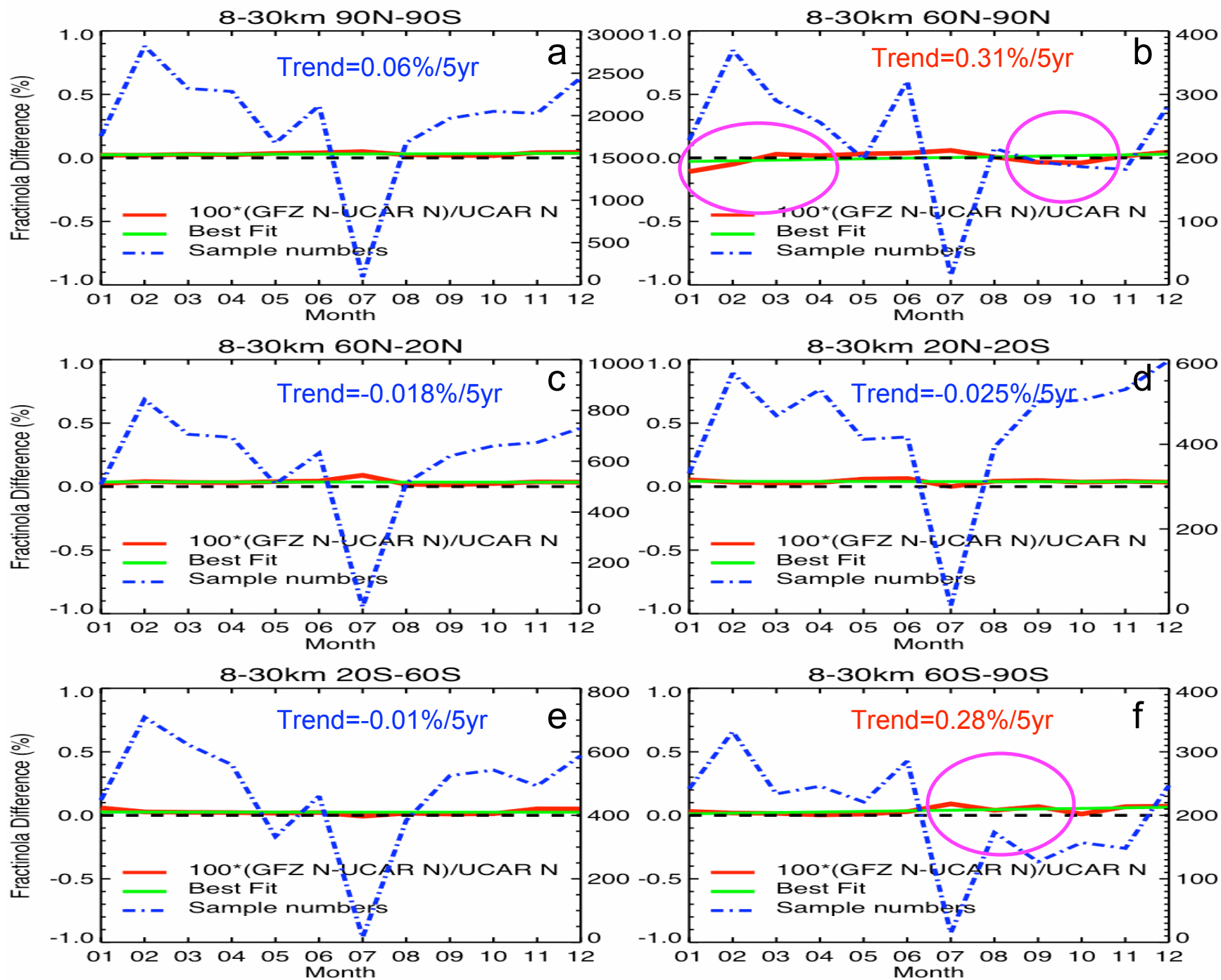


Fig. 6

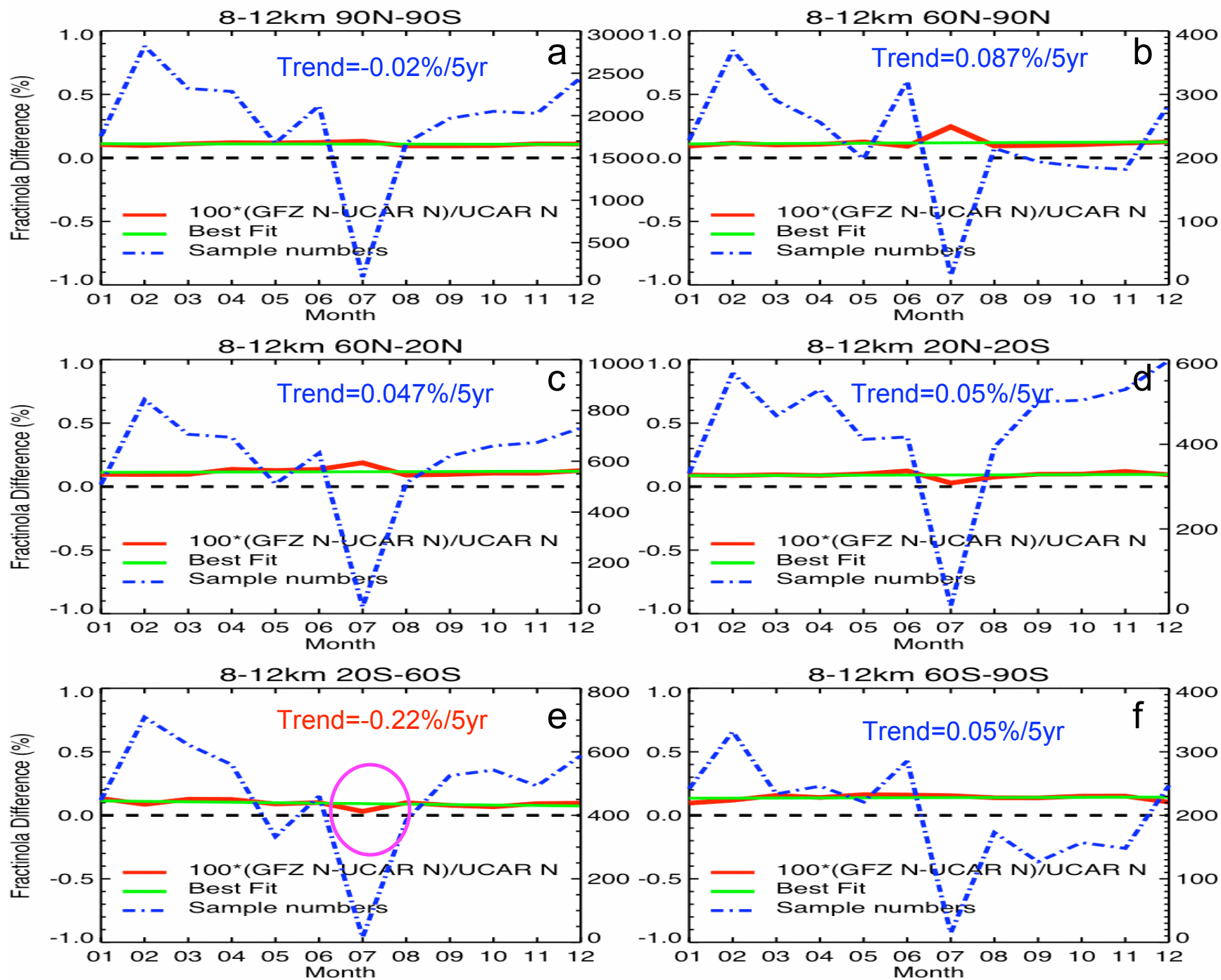


Fig. 7

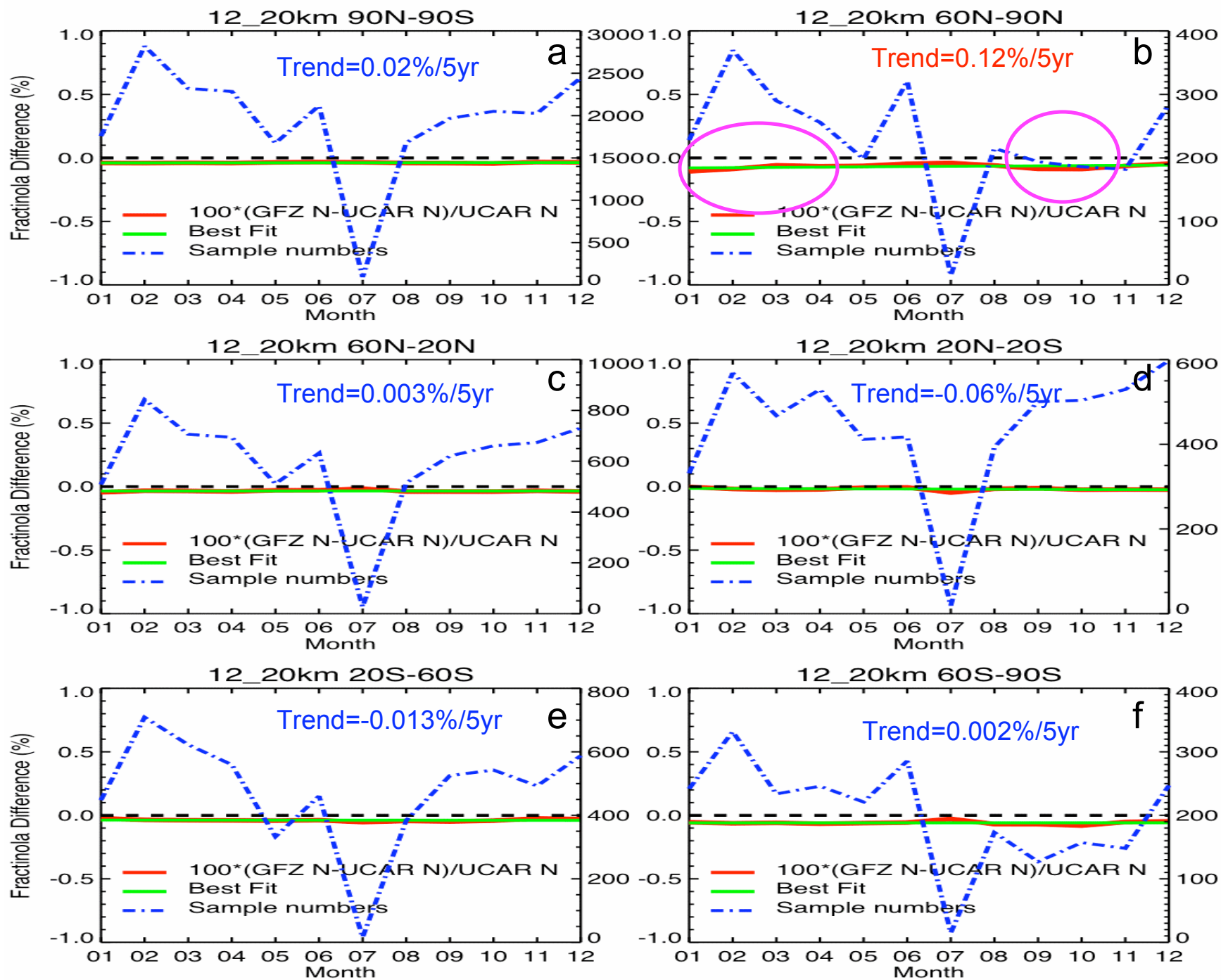


Fig. 8

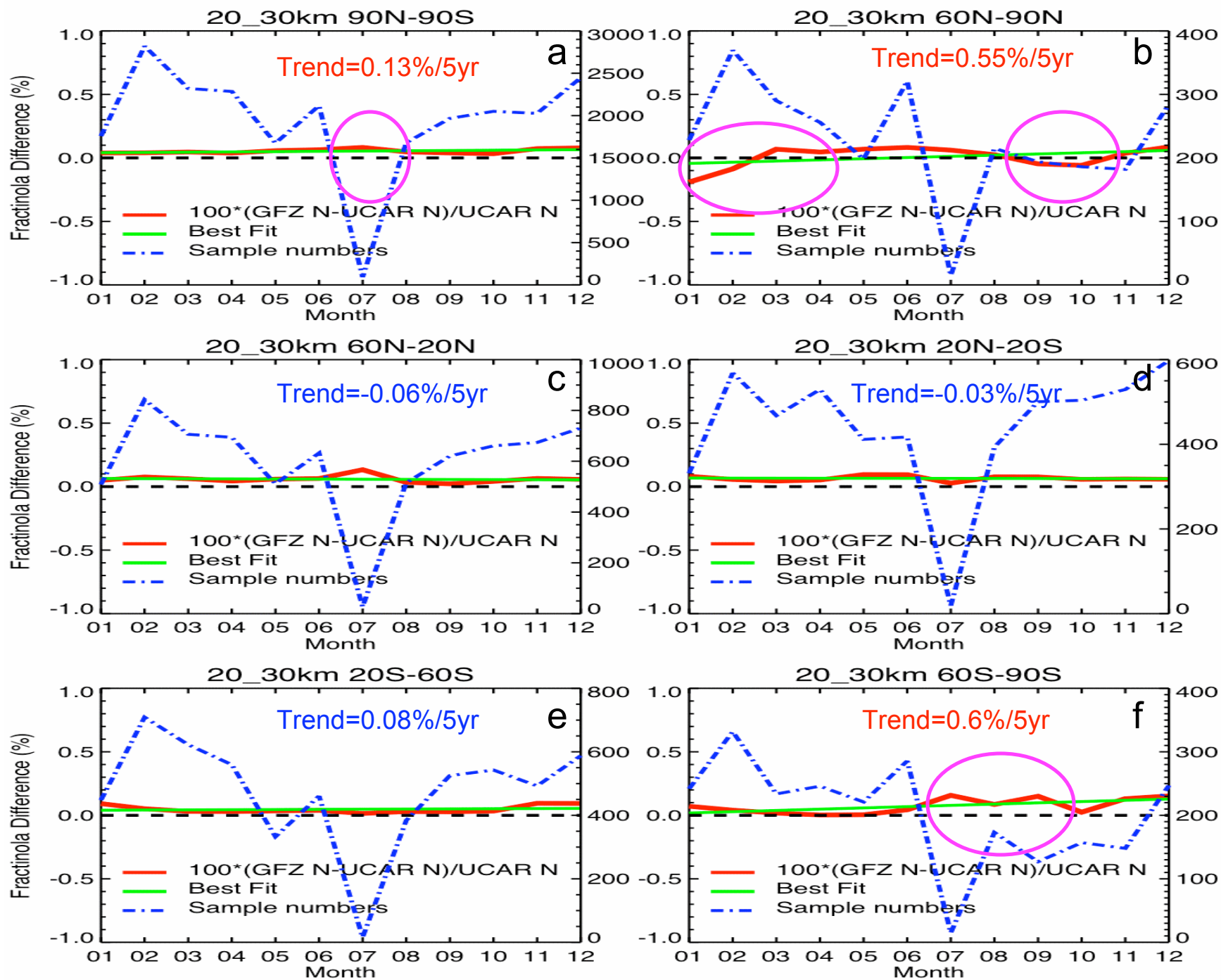


Fig. 9

Fractional Anomalies {(100*GFZ N-UCAR N)/ UCAR N (%)}		Mean bias	Standard deviation	Trend for the best fit (%/5 yrs)
90°N-90° S	8-30 km	0.031	0.011	0.06
	8-12km	0.11	0.012	-0.02
	12-20km	-0.038	0.004	0.02
	20-30km	0.053	0.018	0.13
60°N - 90° N	8-30 km	0.012	0.049	0.31
	8-12 km	0.12	0.042	0.087
	12-20km	-0.067	0.02	0.12
	20-30km	0.008	0.086	0.55
20° N - 60° N	8-30 km	0.036	0.02	-0.018
	8-12 km	0.12	0.028	0.047
	12-20km	-0.034	0.007	0.003
	20-30km	0.059	0.028	-0.06
20° N - 20° S	8-30 km	0.04	0.016	-0.025
	8-12 km	0.12	0.024	0.05
	12-20km	-0.019	0.011	-0.06
	20-30km	0.065	0.02	-0.027
20° S - 60° S	8-30 km	0.025	0.019	-0.01
	8-12 km	0.09	0.028	-0.22
	12-20km	-0.038	0.009	-0.013
	20-30km	0.048	0.029	0.077
60°S - 90° S	8-30 km	0.038	0.03	0.28
	8-12 km	0.14	0.022	0.05
	12-20km	-0.06	0.013	0.002
	20-30km	0.073	0.06	0.6

Table 1