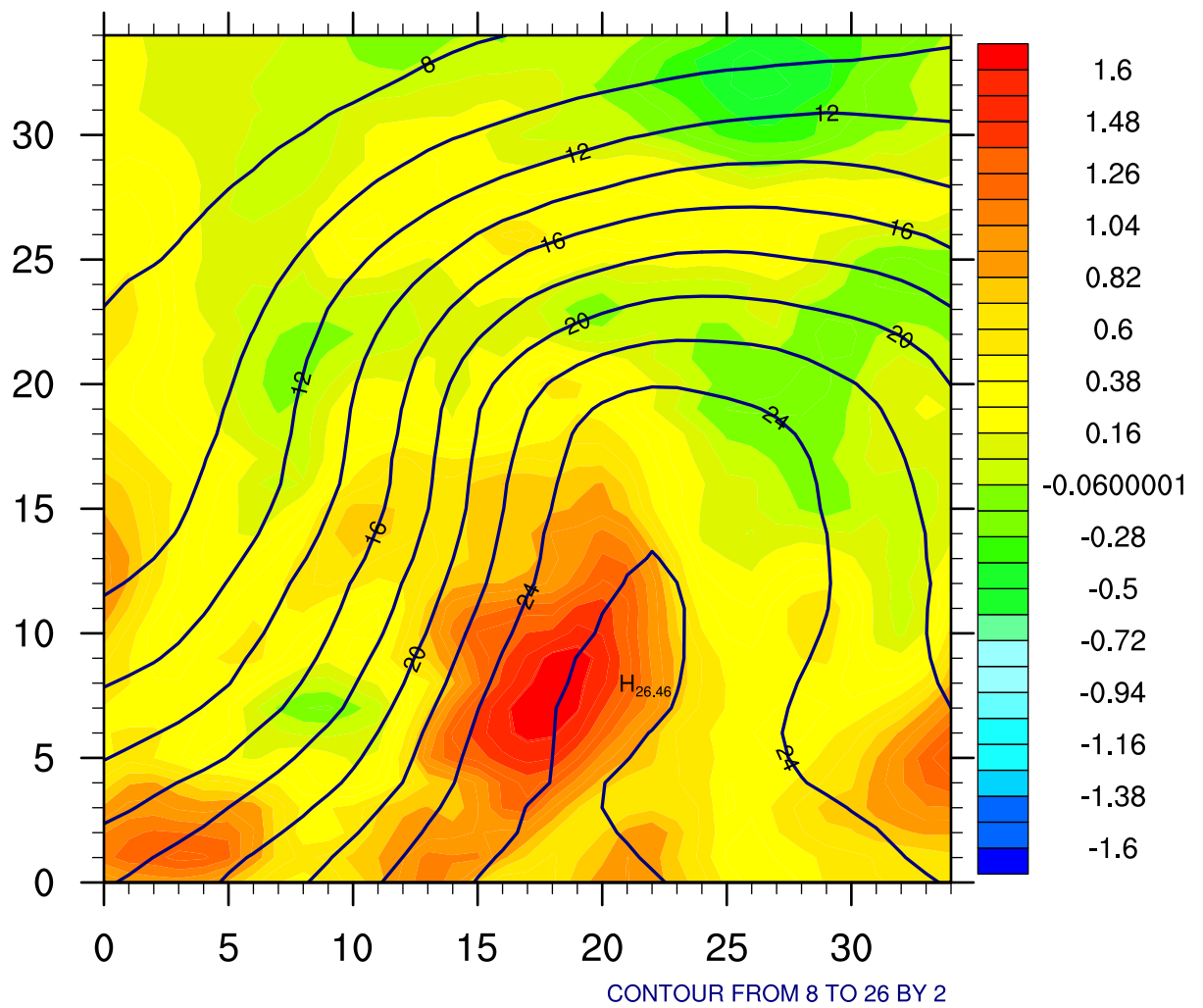
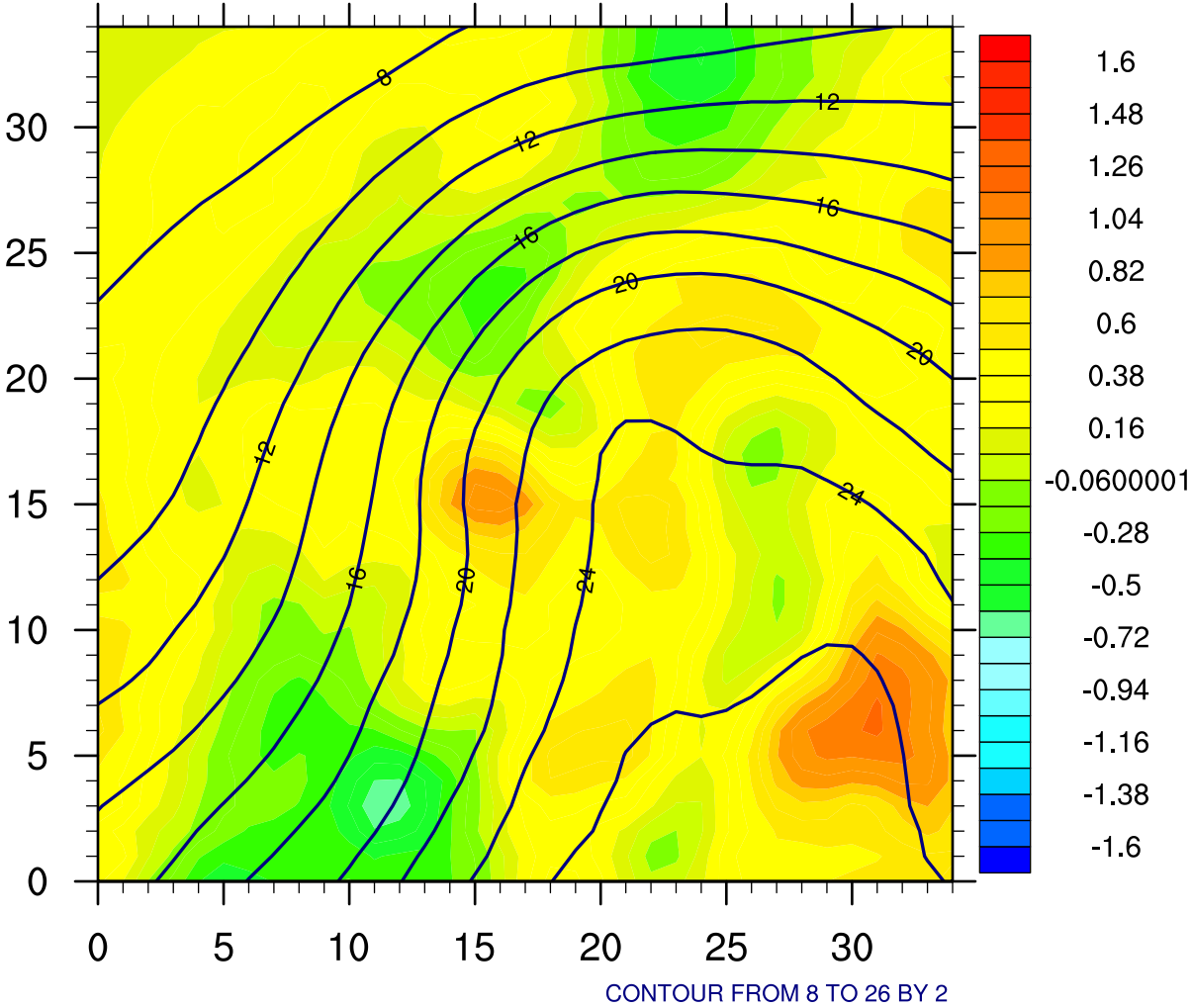


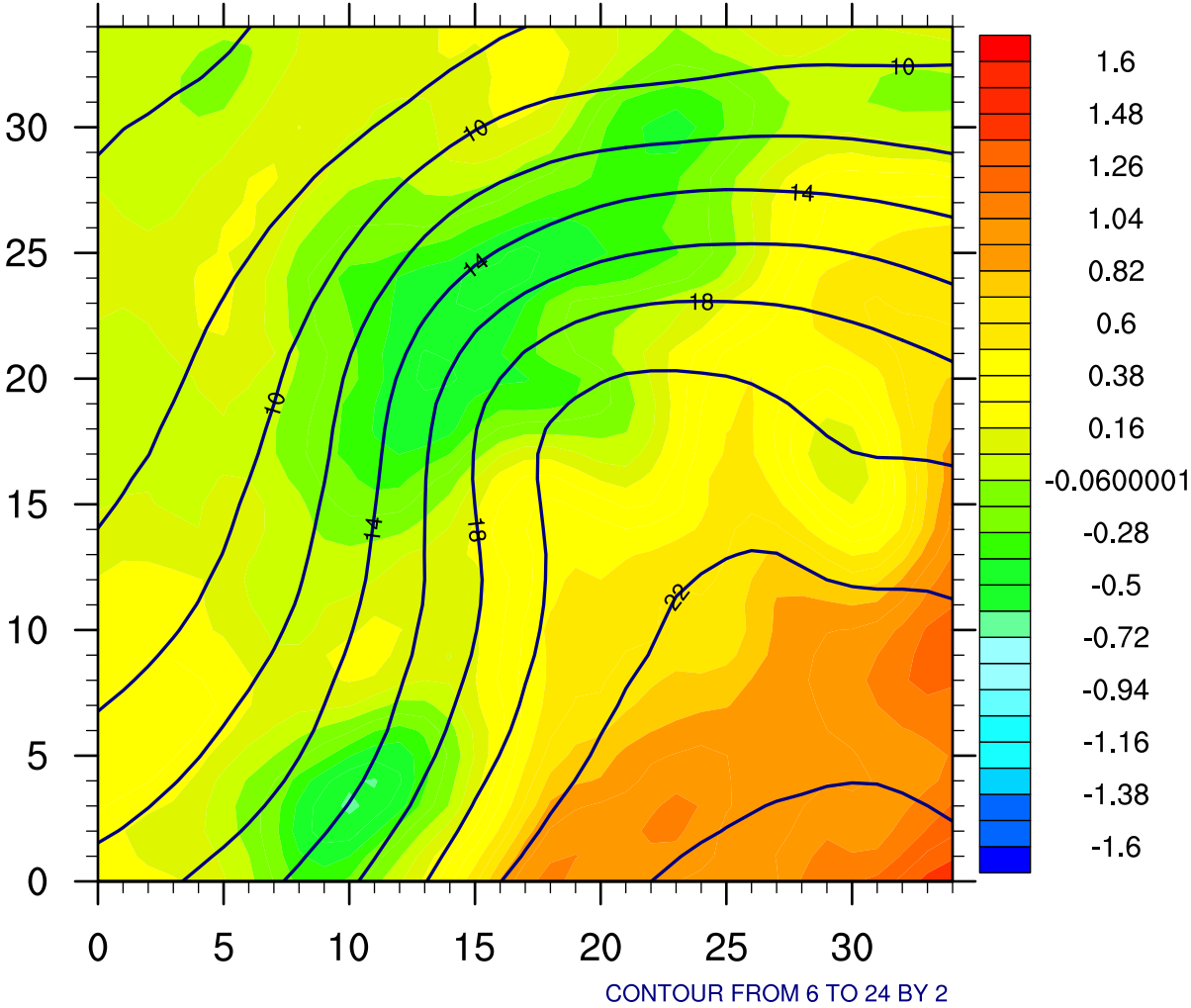
Total water bias evolution for (-) cases h6-24(kg/m²)



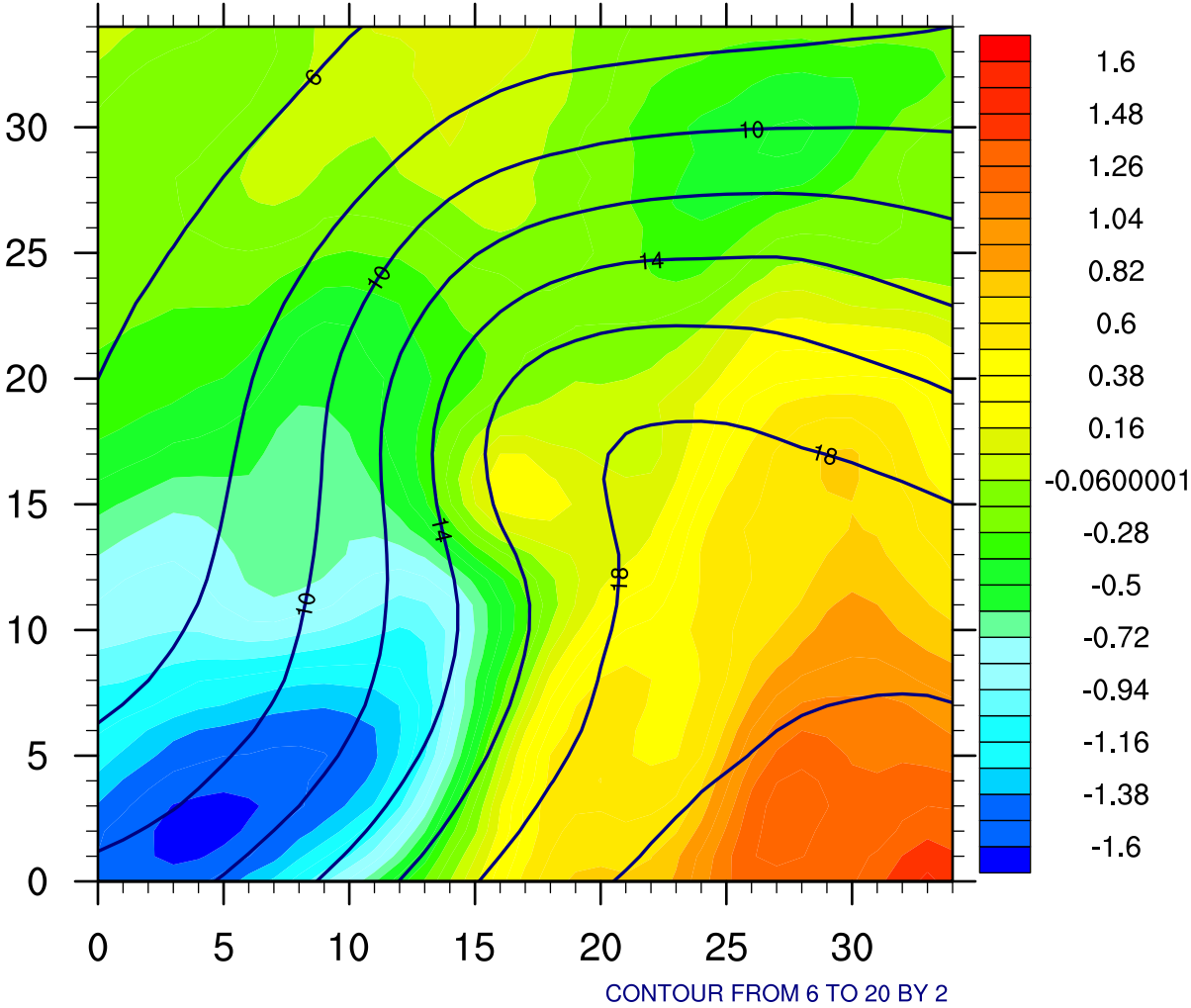
Total water bias evolution for (-) cases h30-48(kg/m²)



Total water bias evolution for (-) cases h54-72(kg/m²)



Total water bias evolution for (-) cases h78-96(kg/m²)



Total water bias evolution for (-) cases h102-120(kg/m²)

