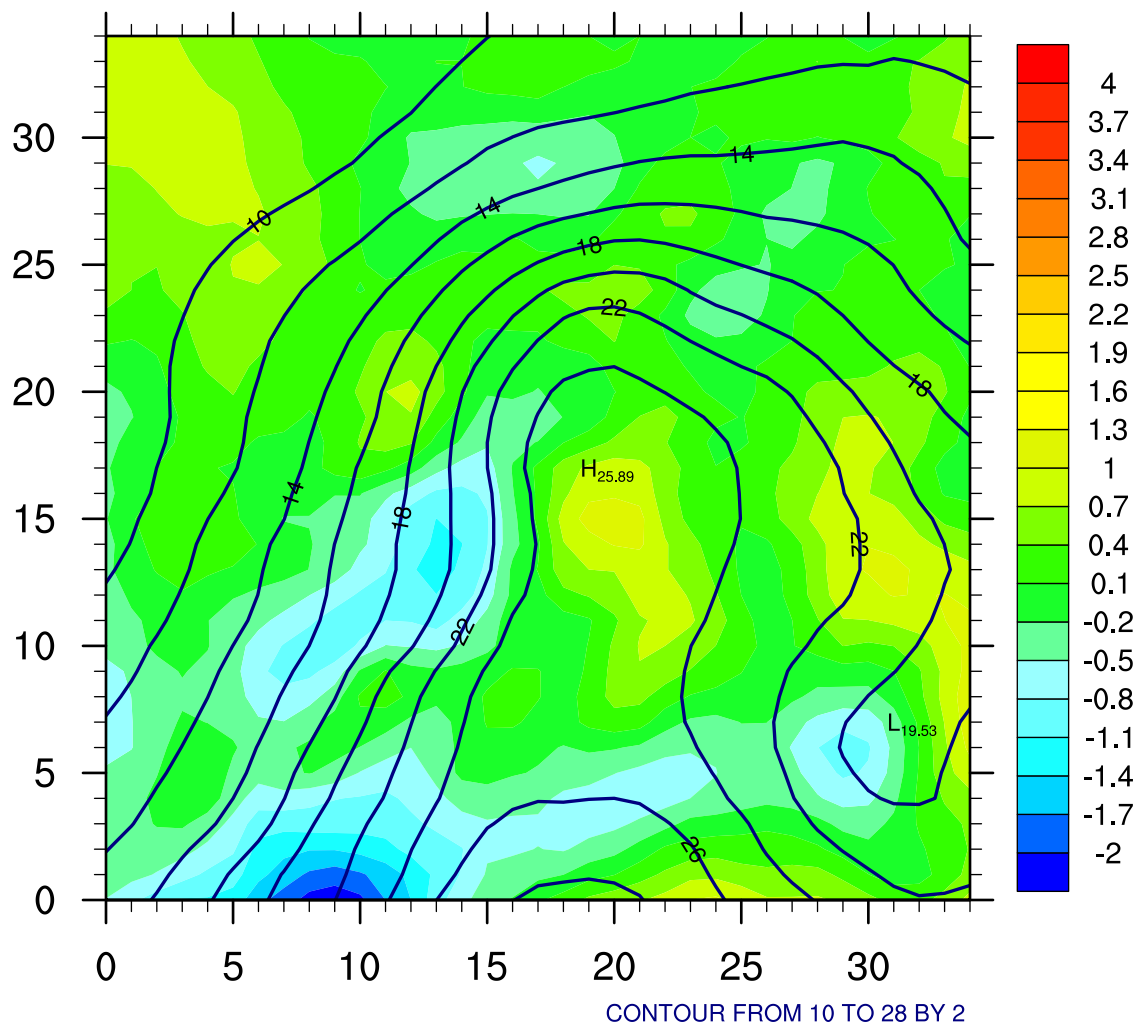
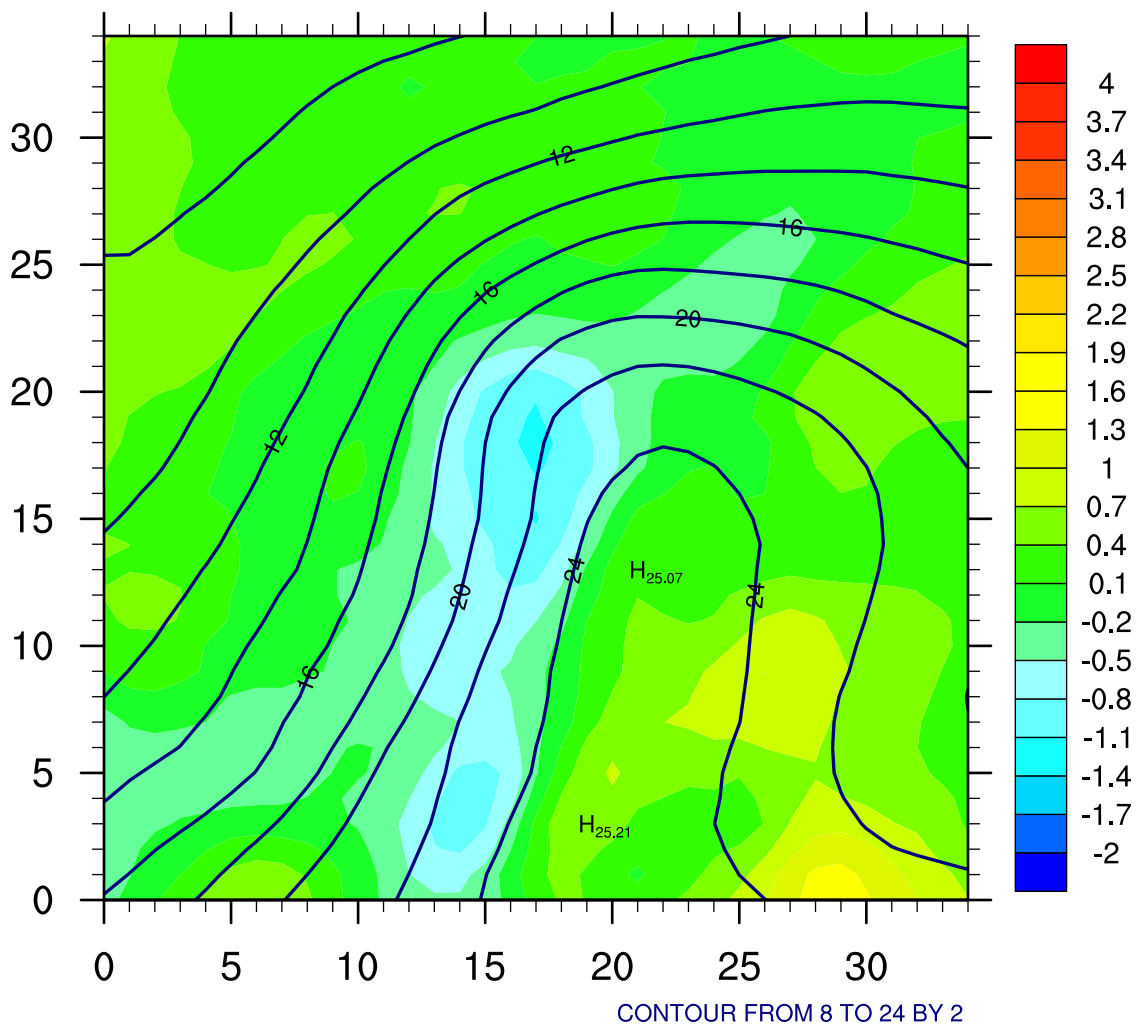


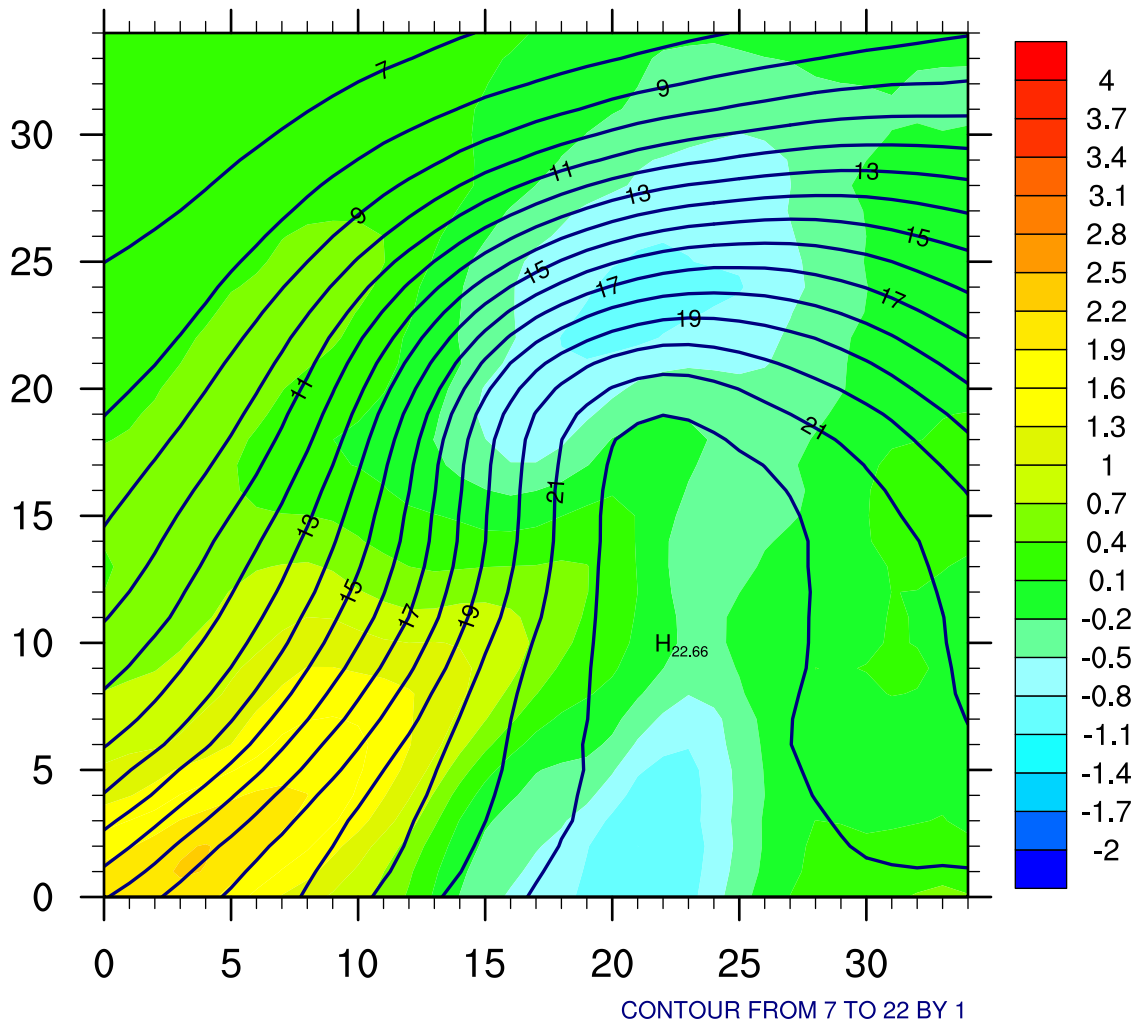
# Total water bias evolution for (+) cases h6-24(kg/m<sup>2</sup>)



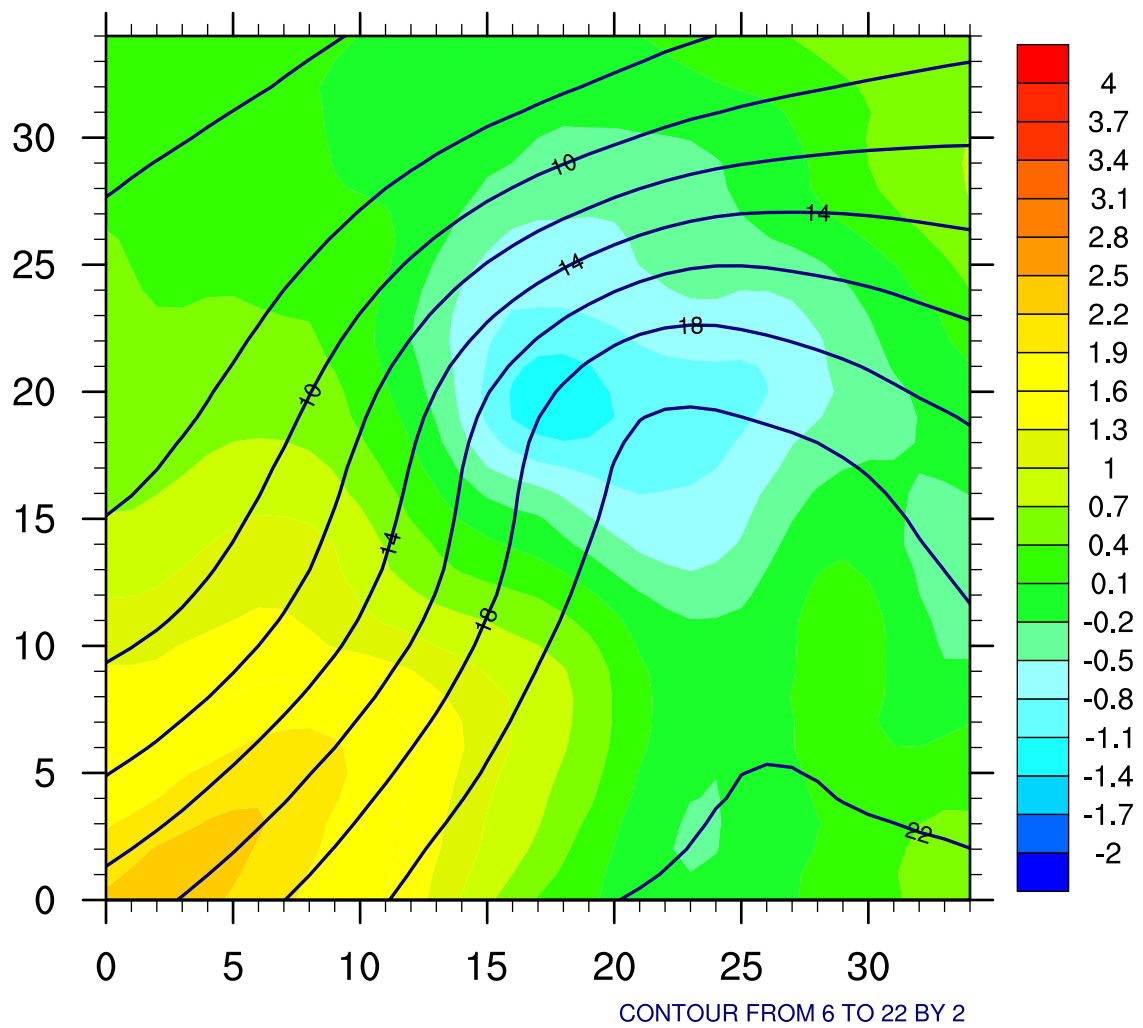
# Total water bias evolution for (+) cases h30-48(kg/m<sup>2</sup>)



# Total water bias evolution for (+) cases h54-72(kg/m<sup>2</sup>)



# Total water bias evolution for (+) cases h78-96(kg/m<sup>2</sup>)



# Total water bias evolution for (+) cases h102-120(kg/m<sup>2</sup>)

