

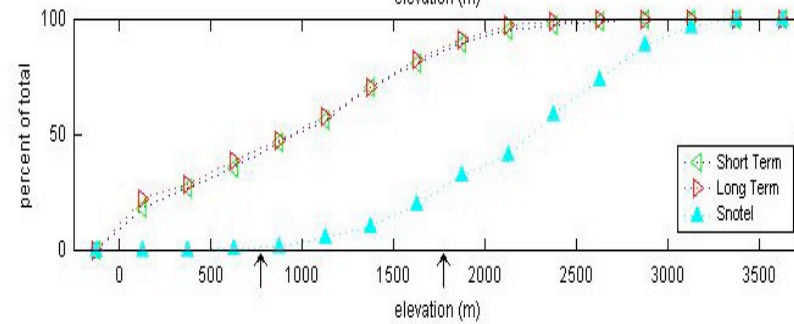
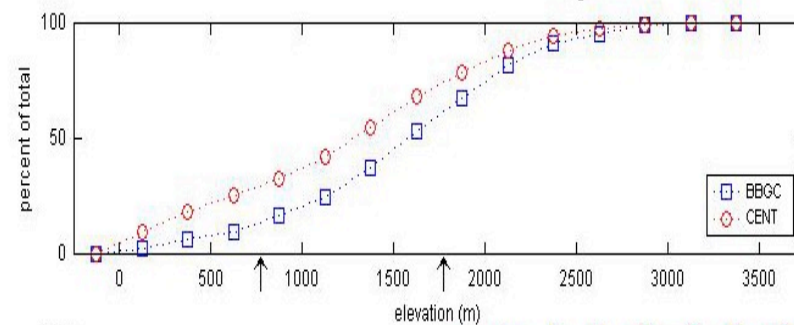
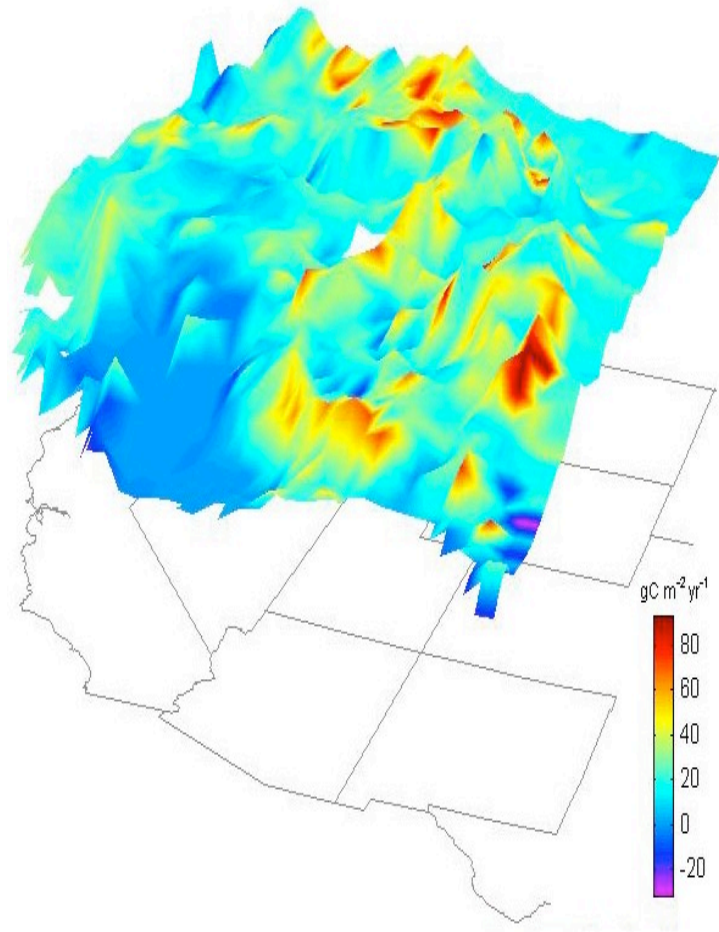


**Looking for carbon in all the
wrong places:**

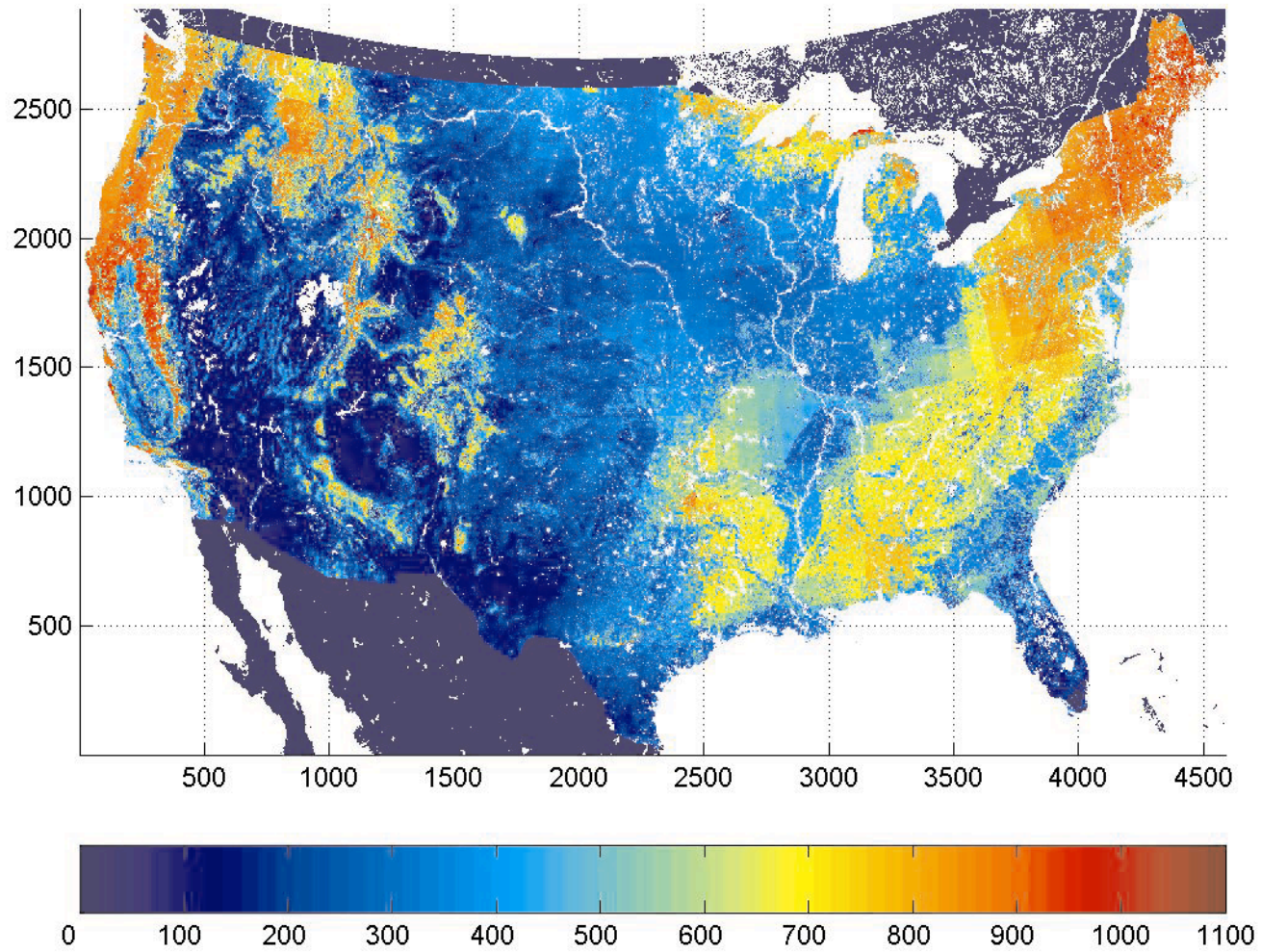
ACME-CME 04

**Dave Schimel Jielun Sun Russ Monson Don Lenschow Britt
Stephens Leo Sternberg Jim Ehleringer Dennis Ojima Tomislava
Vukicevic Steve Oncley Steve Running Tony Delany Stephan de
Wekker Steve Aulenbach Chun Ta Lai Jia Hu**

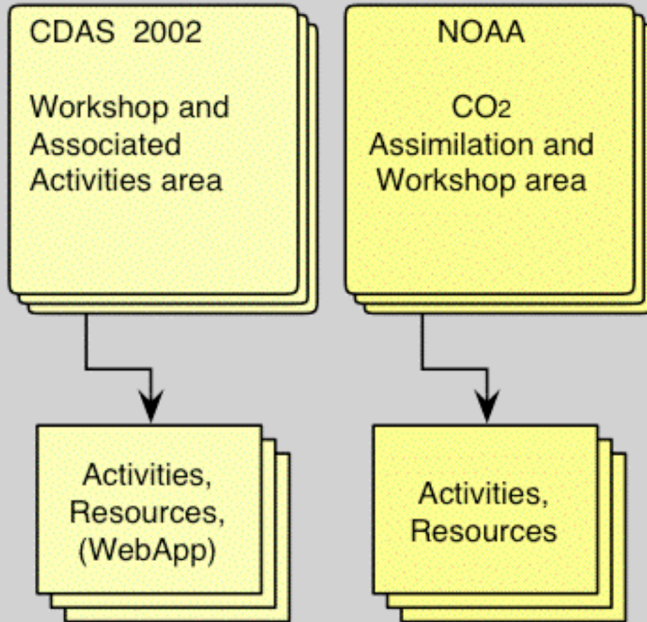
Modeling carbon exchange



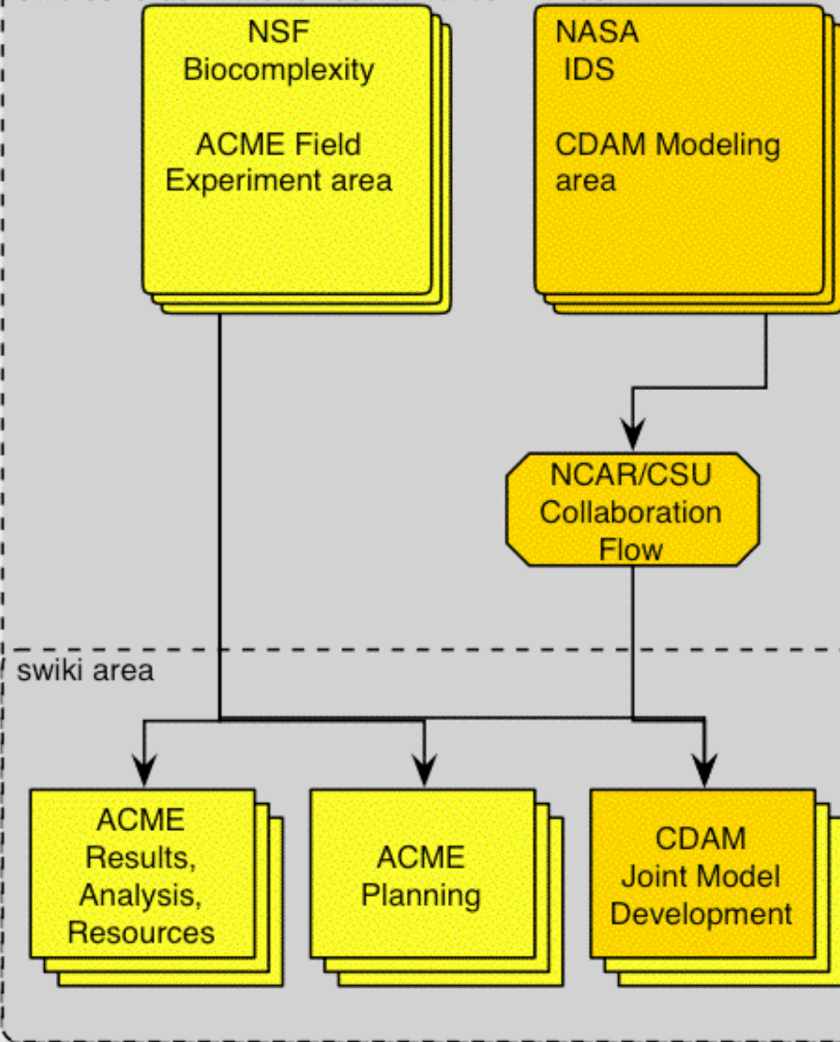
Half or more of US GPP is in mountainous regions



Carbon data assimilation

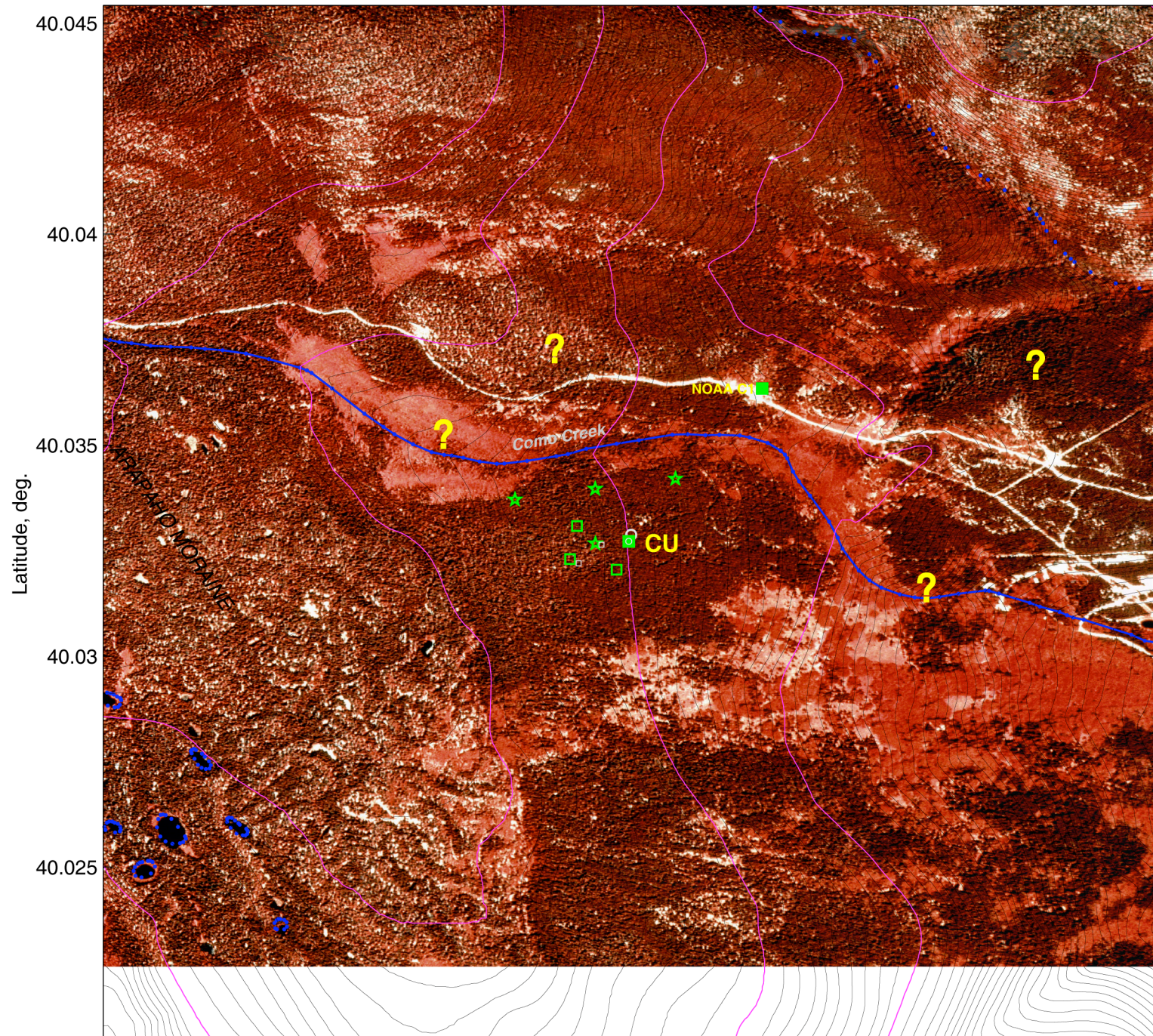


Integration of field, aircraft, remote sensing and modeling studies to estimate terrestrial carbon fluxes

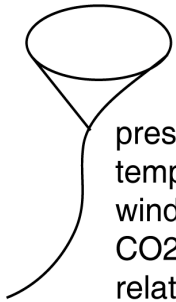




2.8 x 2.8 km Box

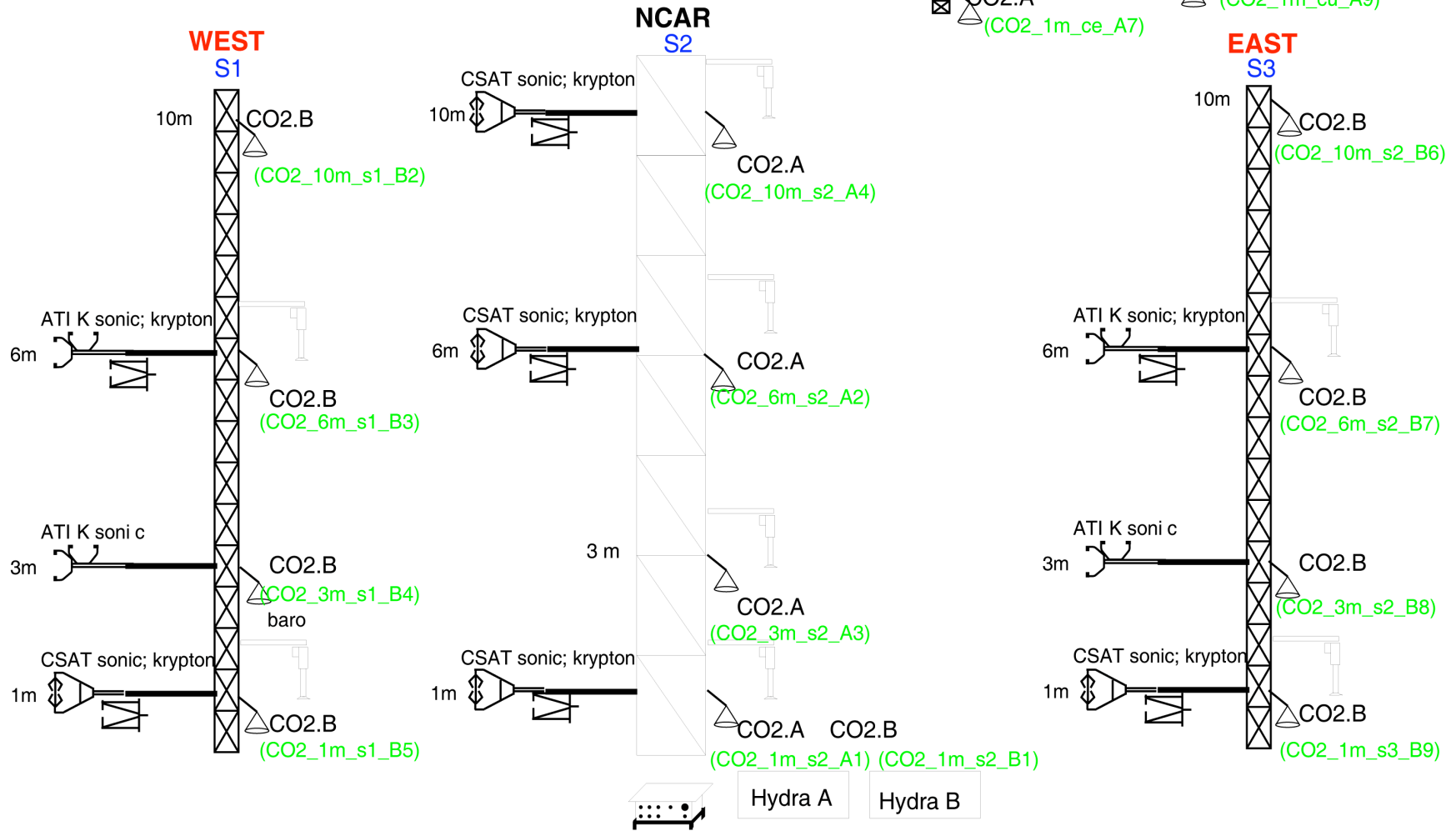
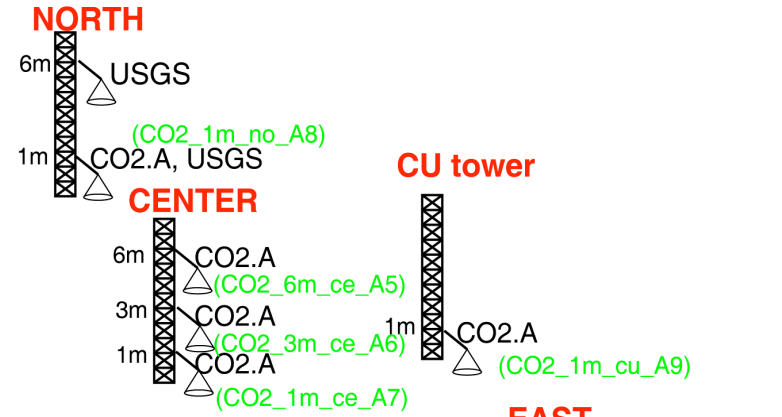


tethered balloon

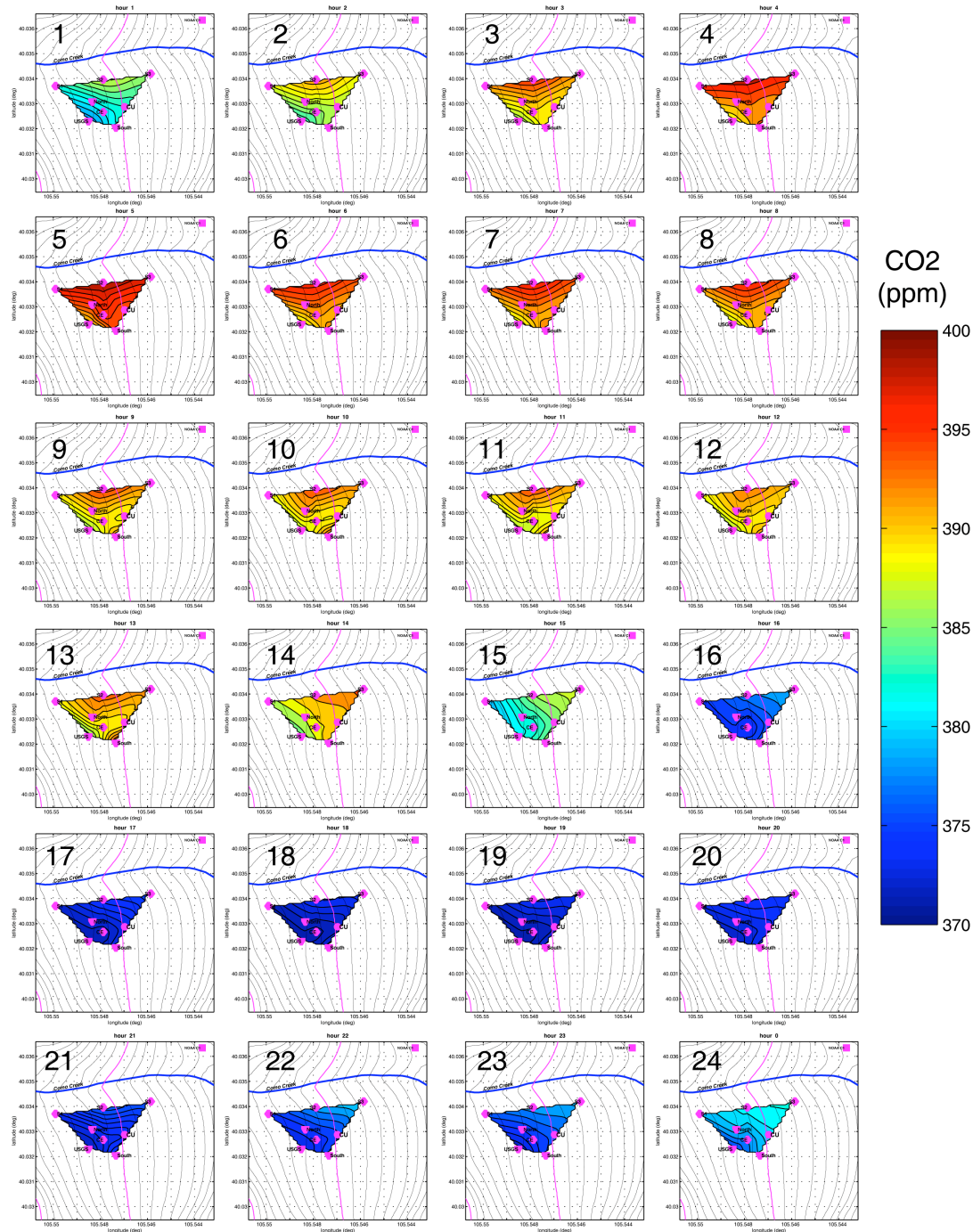


pressure
 temperature
 wind speed and direction
 CO2
 relative humidity

NCAR Sensor Layout



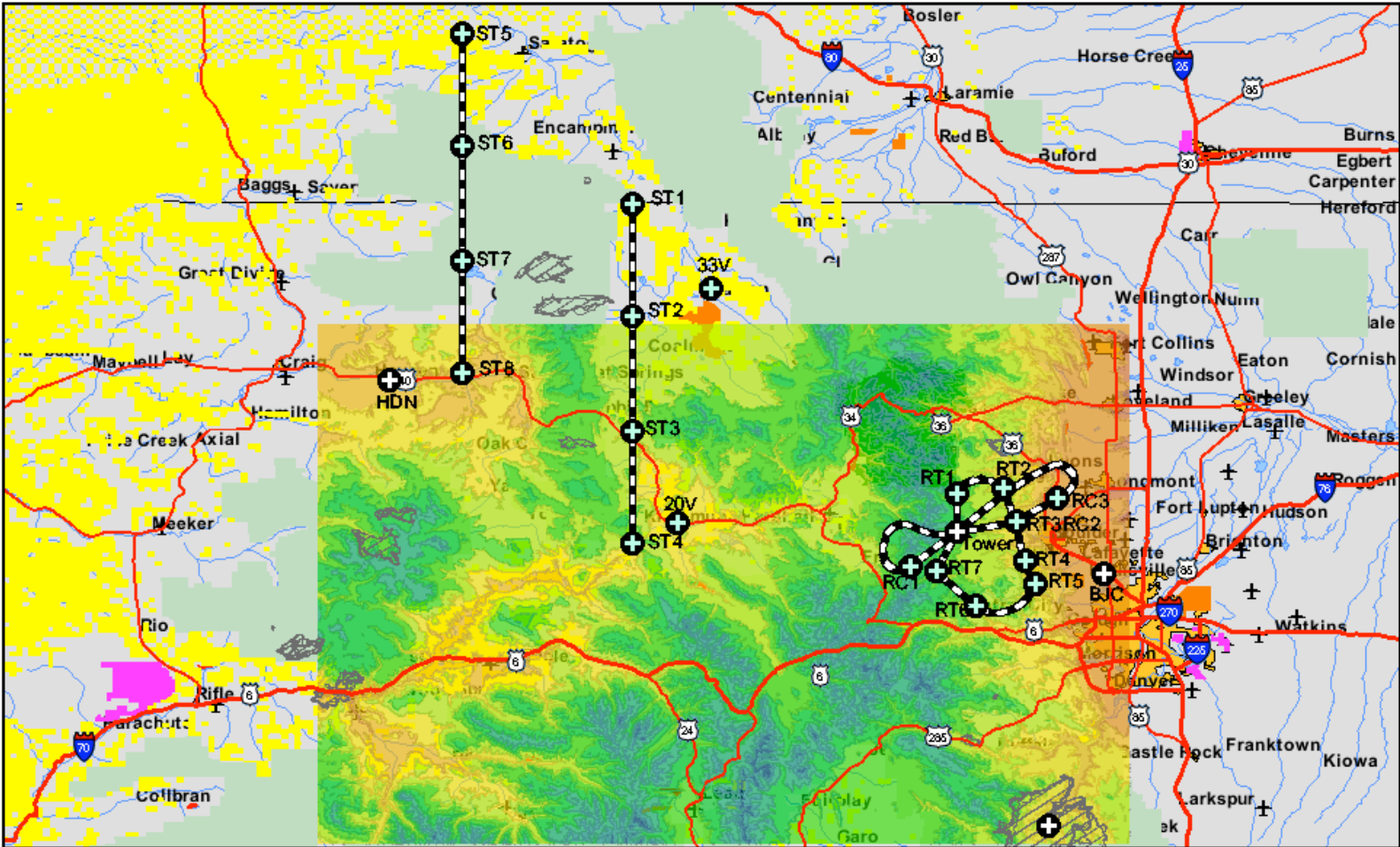
Diurnal variations of spatial variations of CO2 (UTC)



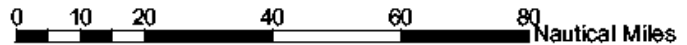
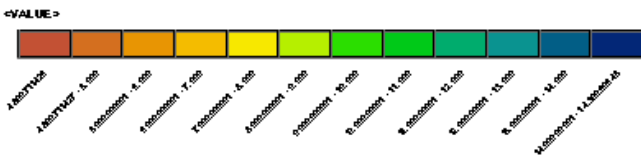


Airborne Carbon in the Mountains Experiment

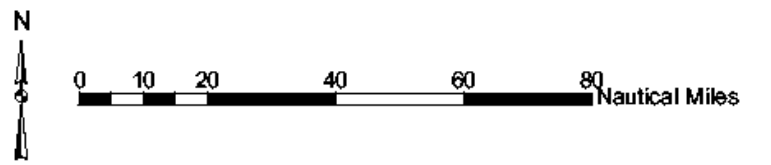
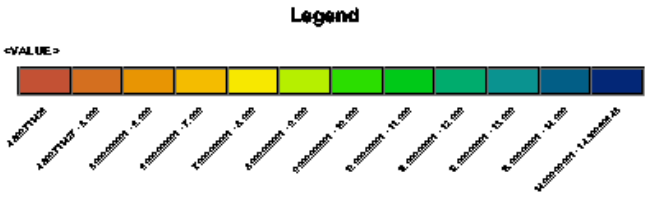
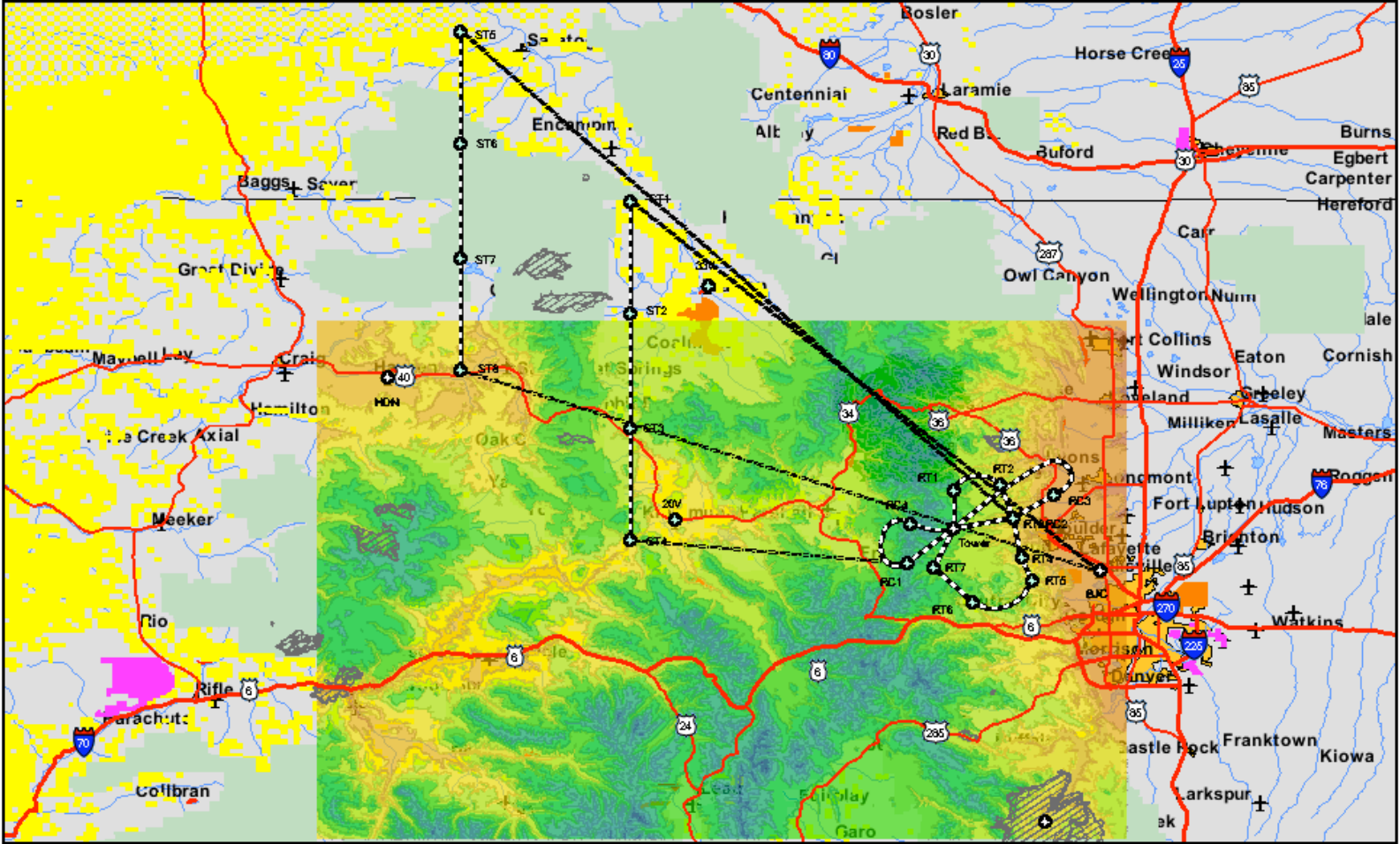
DRAFT: ACME Morning Flight



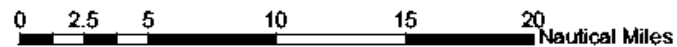
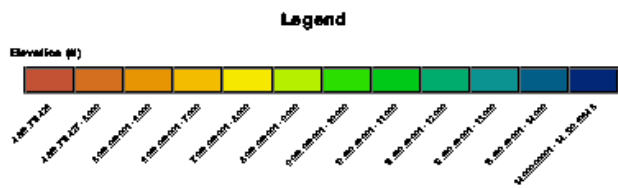
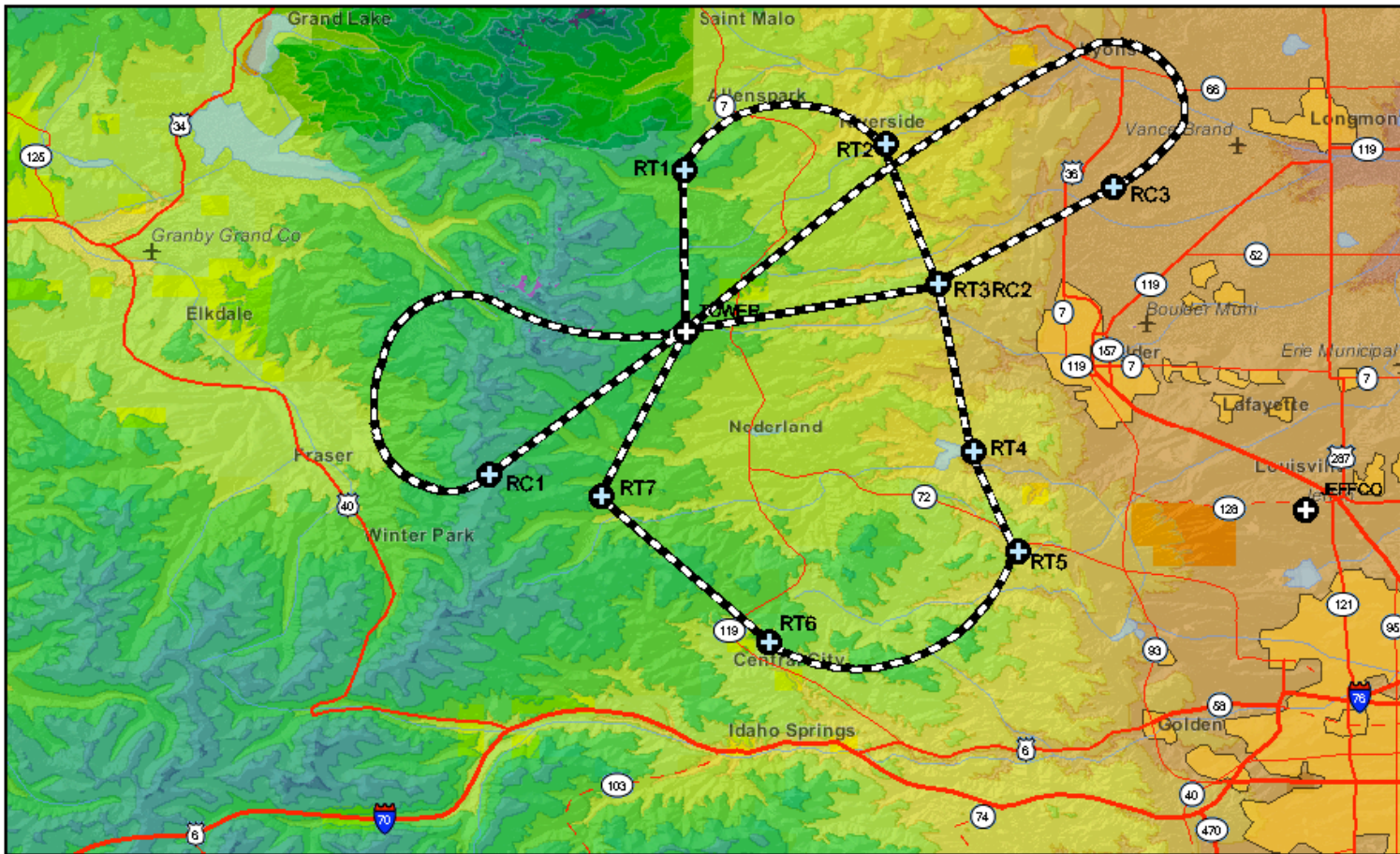
Legend

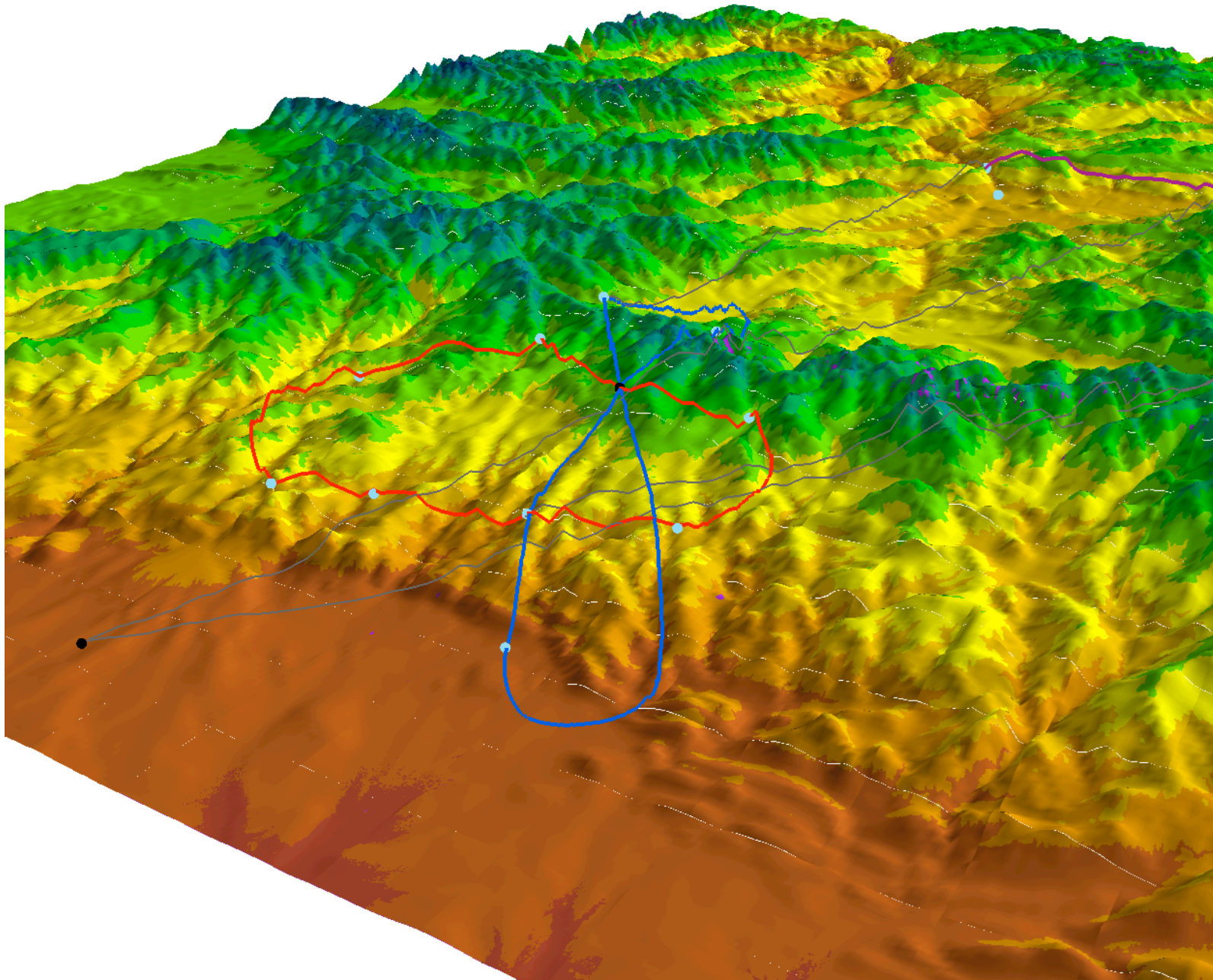


DRAFT: ACME Morning Flight

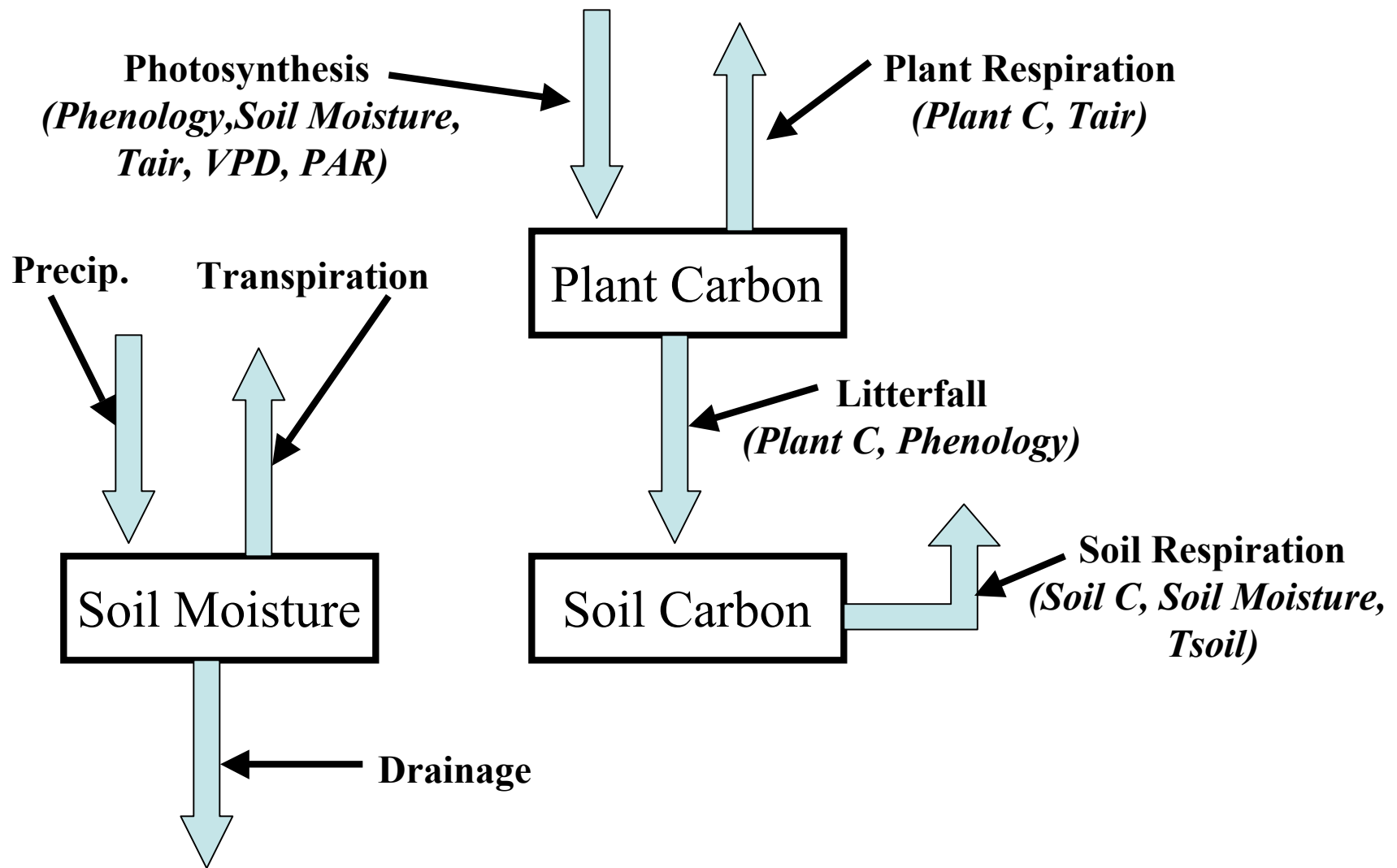


DRAFT: ACME Racetrack and Rollercoaster Flight Tracks

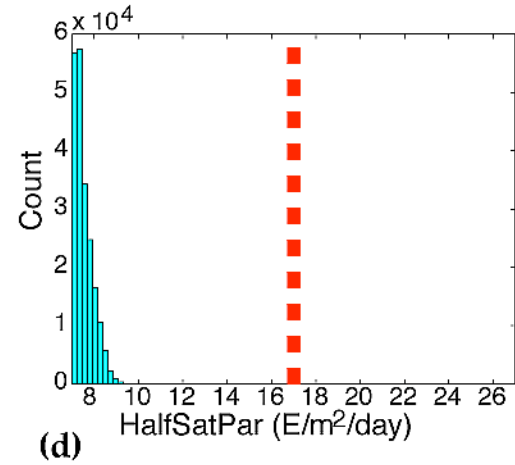
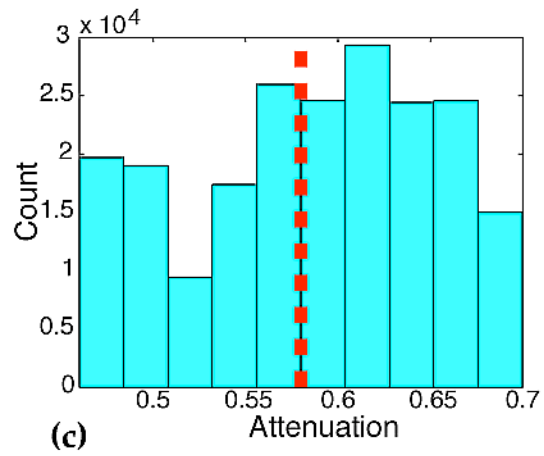
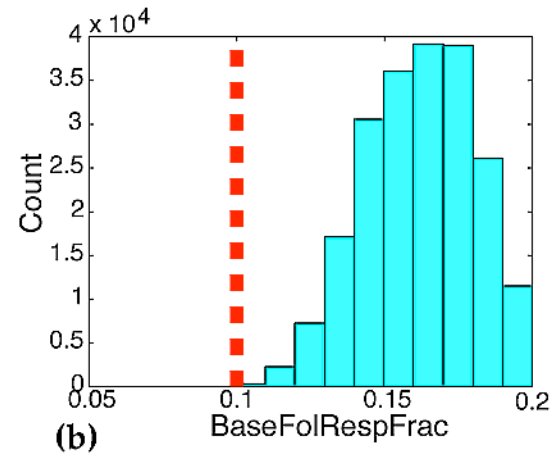
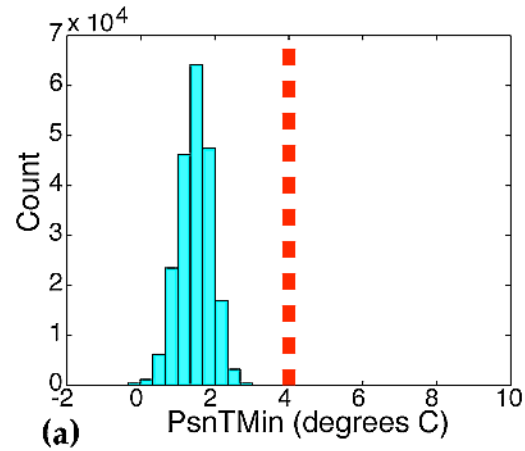




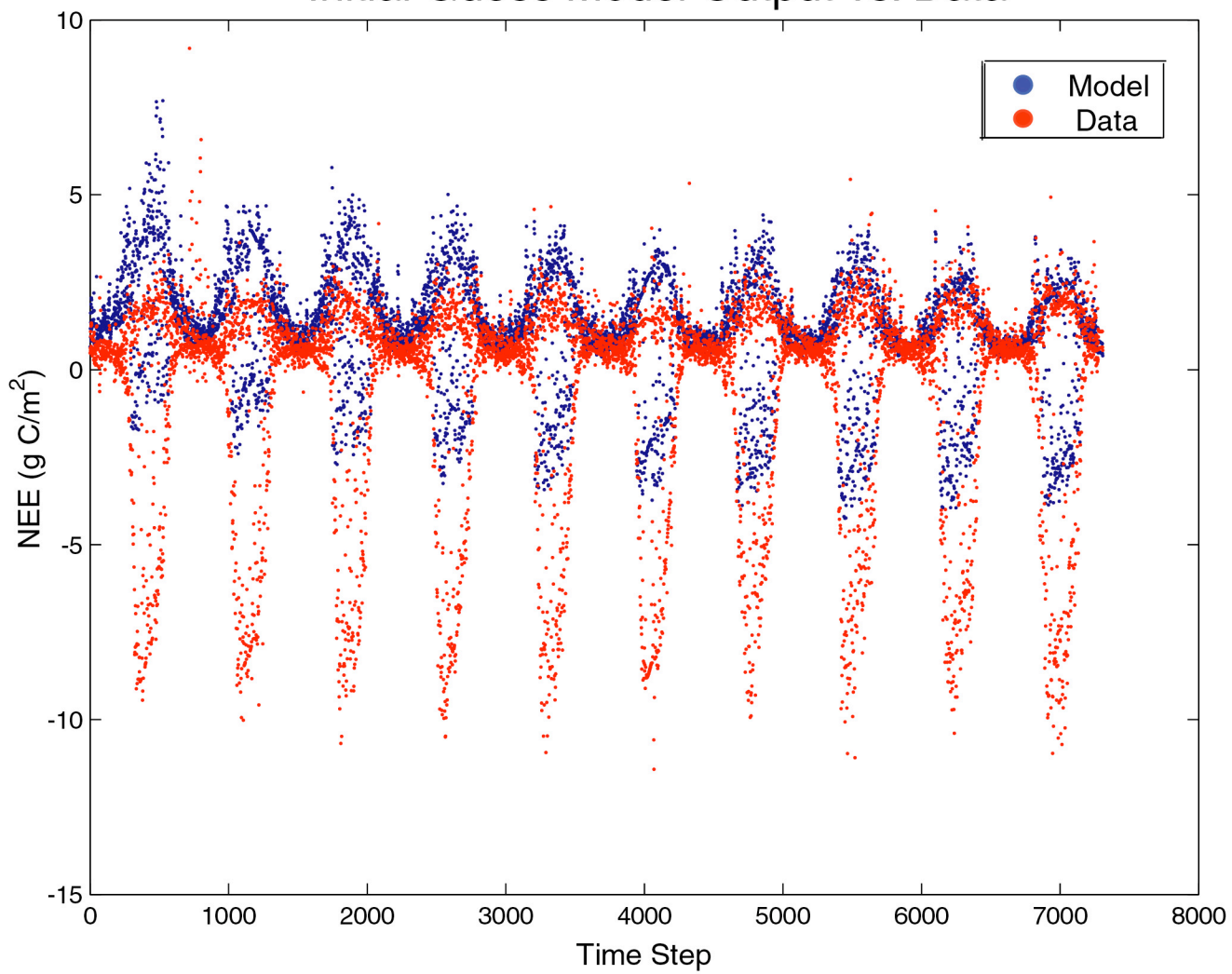
SPACENET Model Structure



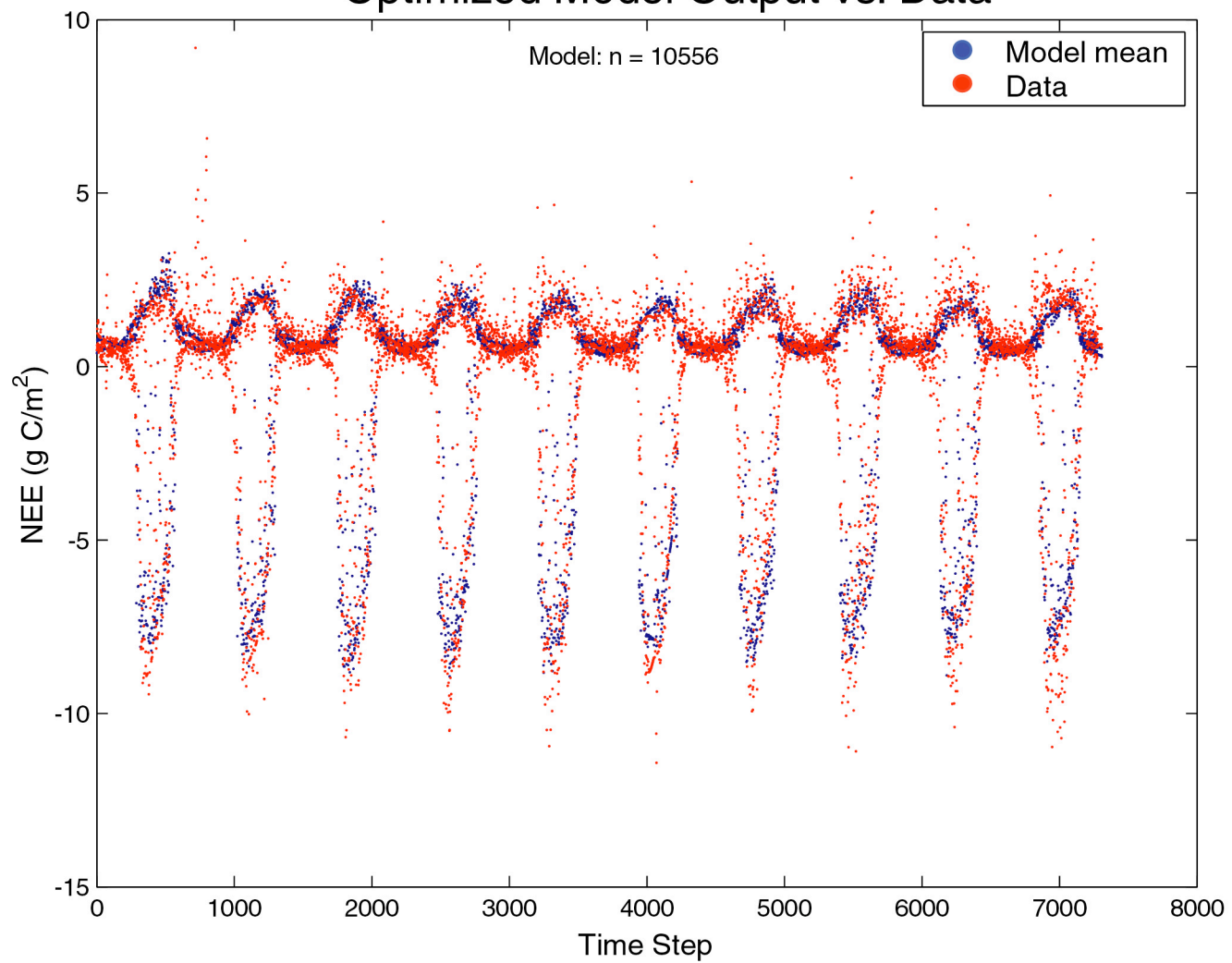
1-D results - Harvard Forest



Initial Guess Model Output vs. Data



Optimized Model Output vs. Data



Model vs. Data: Unoptimized & Optimized Parameters

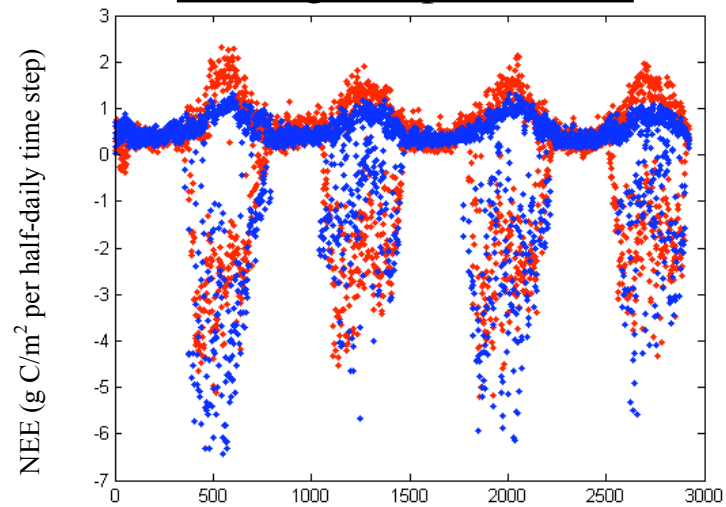
Blue: Model

Red: Data

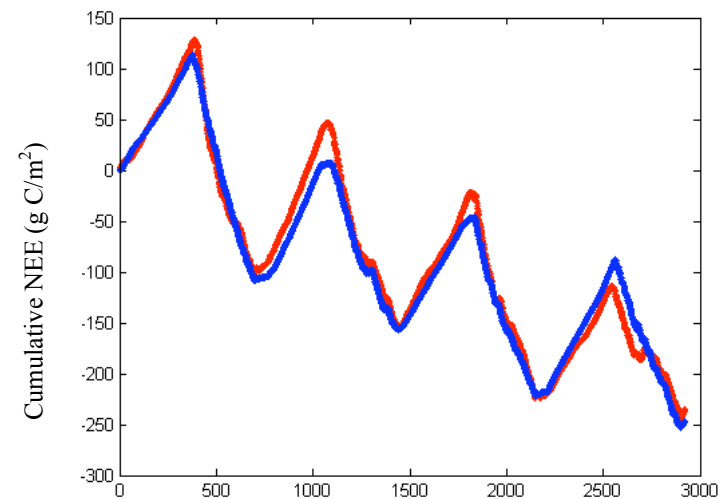
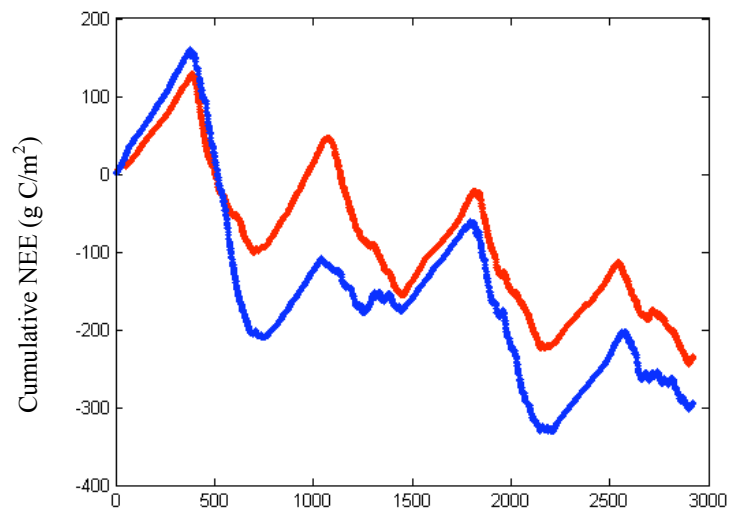
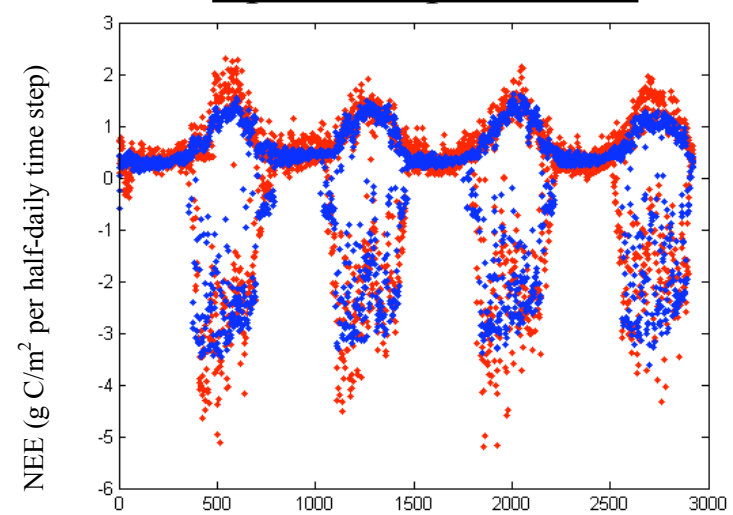
Dates: 11/1/98 – 10/31/02

Each point represents one half-daily time step

Initial guess parameters

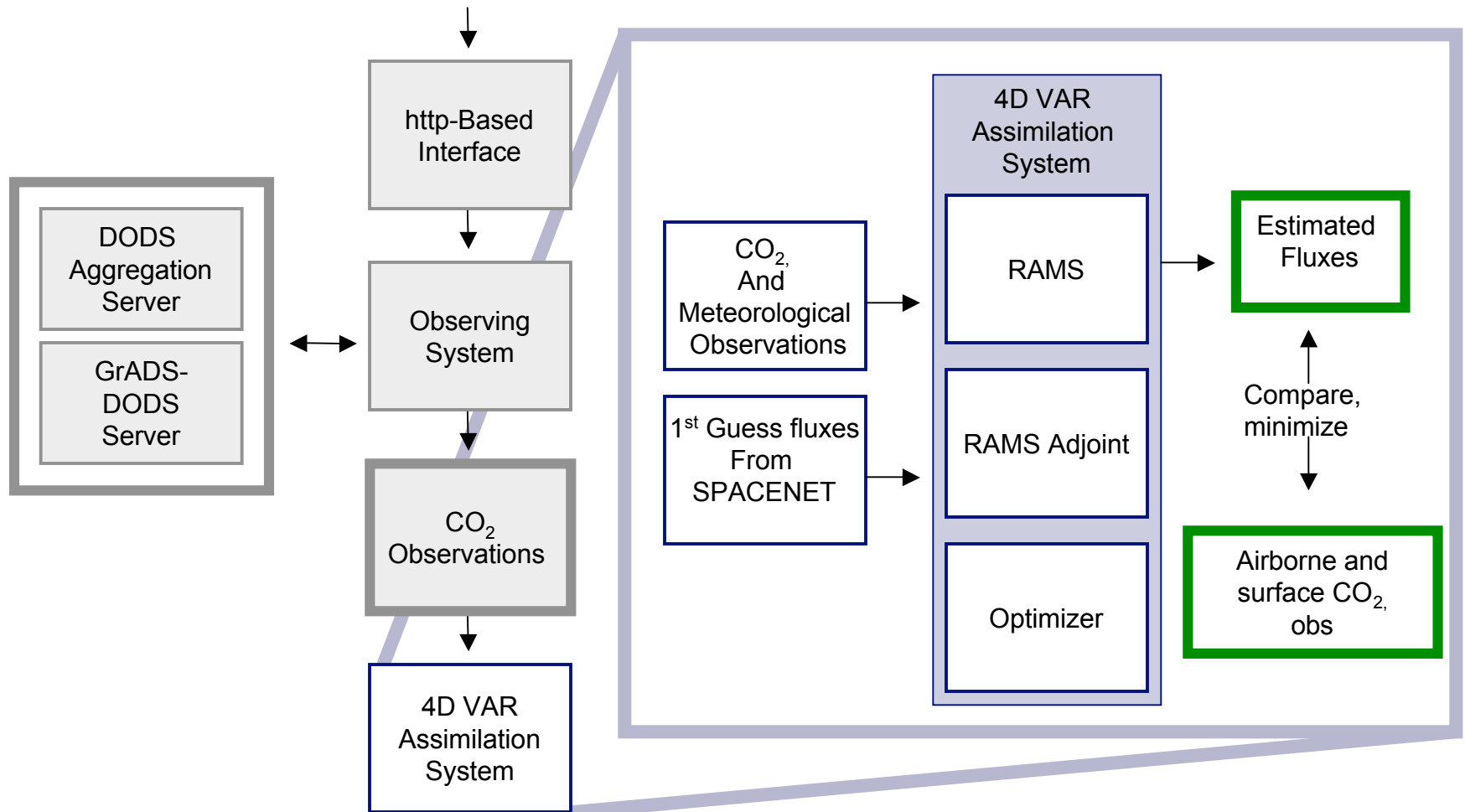


Optimized parameters



Regional carbon data assimilation system based on RAMS atmosphere model

Carbon Data-Model Assimilation (C-DAS)



<http://dataportal.ucar.edu/CDAS/>



Looking to the future - a regional BGS Front Range study

- Carbon issues
- Water issues
- Land use change
- Urbanization/ urban - rural interface
- Air quality
- A “regional” lab for method, instrument and sensor web development
- An opportunity for education and outreach (extend the IDEAS concept)

Timing: ACME-CME 2 in 2006-7 as a building block?

NACP Mountain Intensive

NEON