

Variations on Be according to Berre

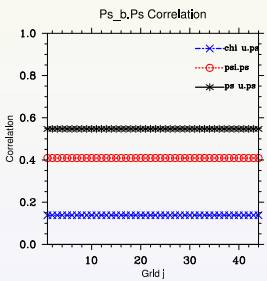
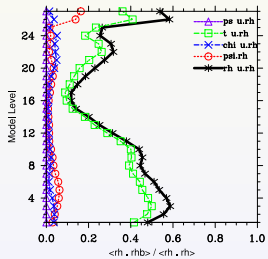
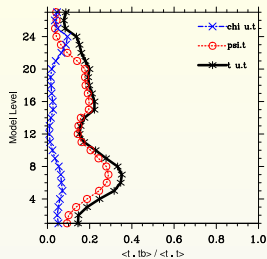
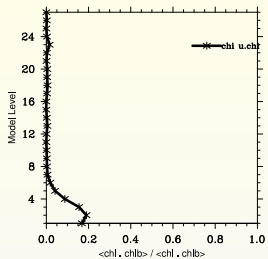
Monika & Rizvi

April 16, 2009

New control variables

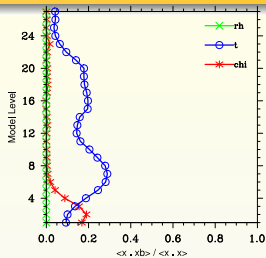
- ψ , χ_u , T_u , ps_u , rh_u
- With respect to the original `gen_be`:
 - definition of T_u and ps_u modified to account for correlation with χ_u (and not only with ψ)
 - introduction of rh_u arising from subtracting correlations with ψ , χ_u , T_u and ps_u

Gen_be results for ConUS_200

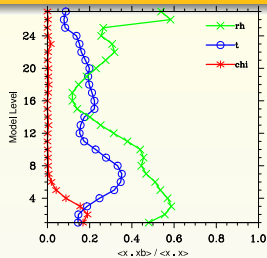
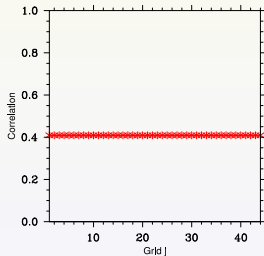


Having problems with $\text{regcoeff}_{ps_u, rh}$

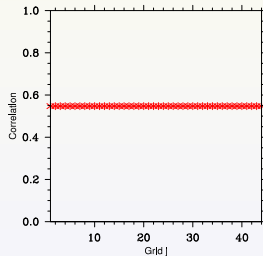
Original versus Berre



Ps_b.Ps Correlation

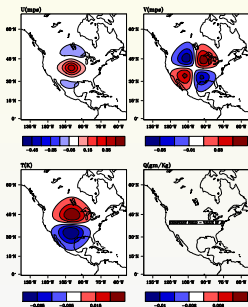


Ps_b.Ps Correlation

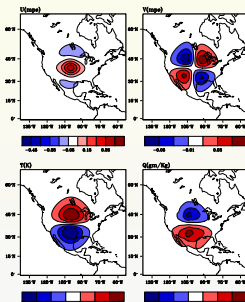


Psot 1 results for ConUS_200

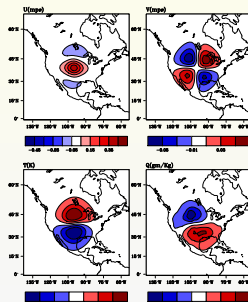
Original



χ_u switched off

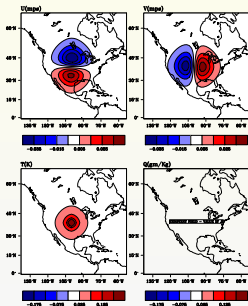


Berre

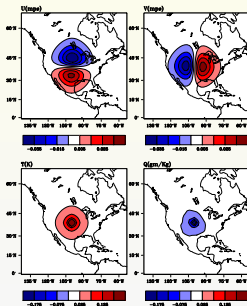


Psot 3 results for ConUS_200

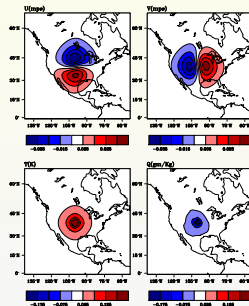
Original



χ_u switched off

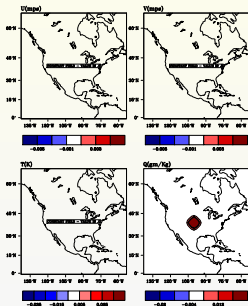


Berre

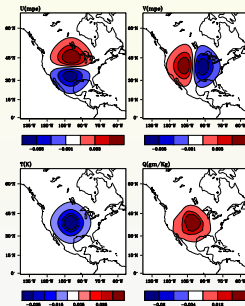


Psot 5 results for ConUS_200

Original



χ_u switched off



Berre

