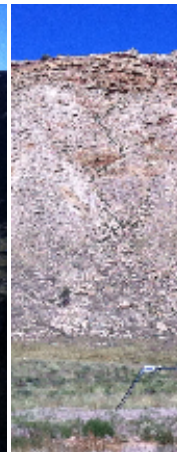
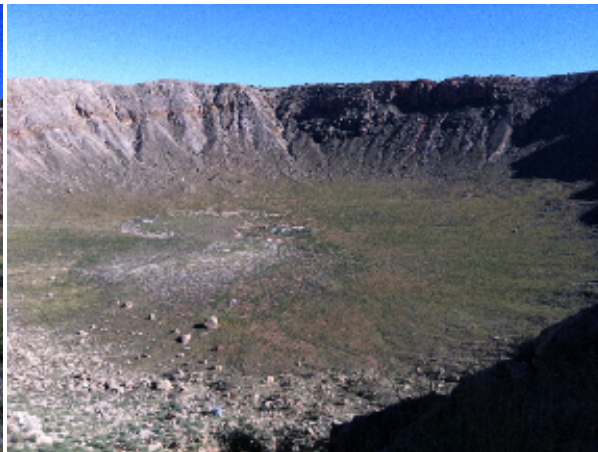
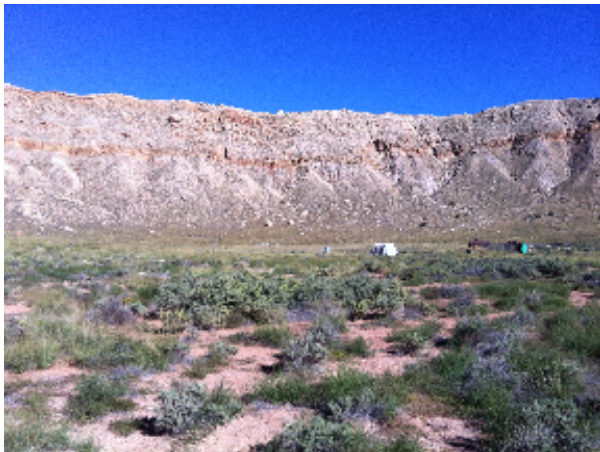
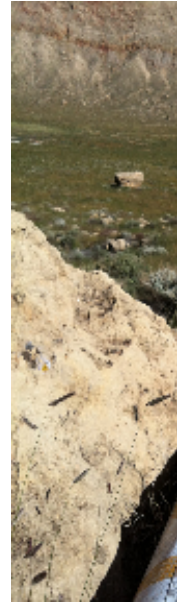


Setup Photos



Bye Bye



Looking SW from FLR at Gordon on RIM



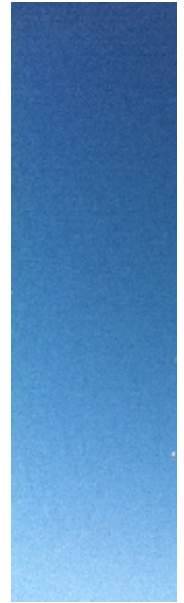
Looking South



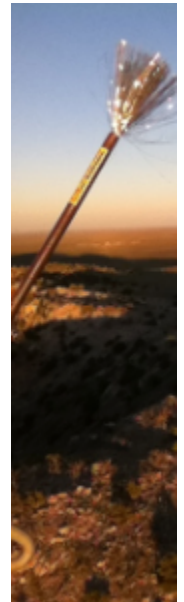
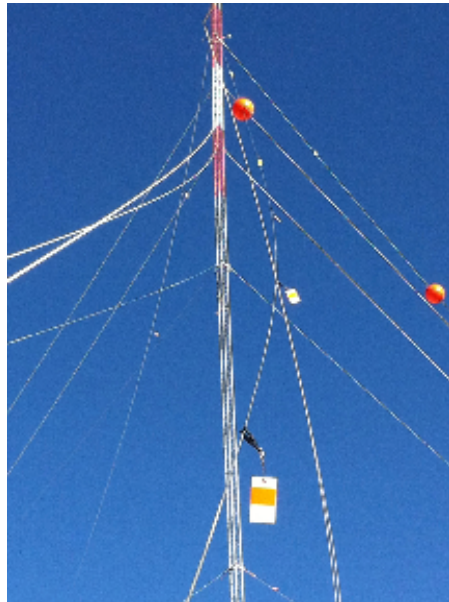
Dressed upper RIM

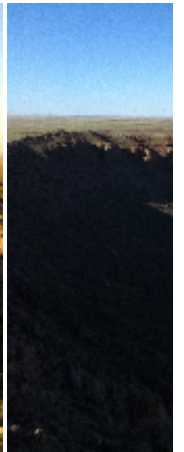
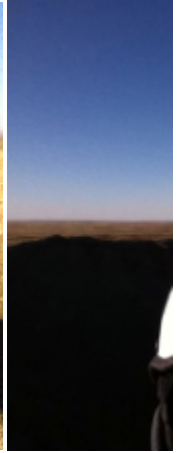
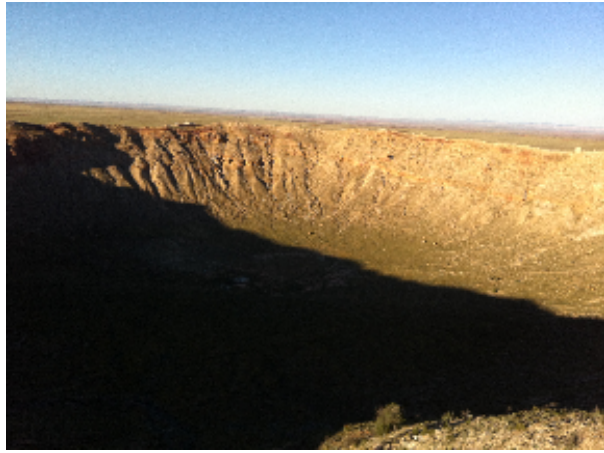
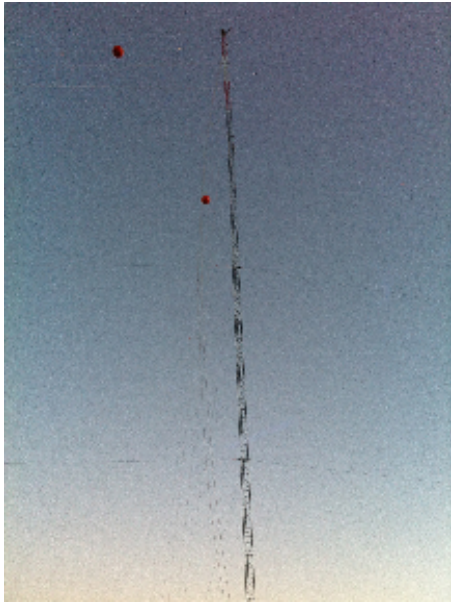


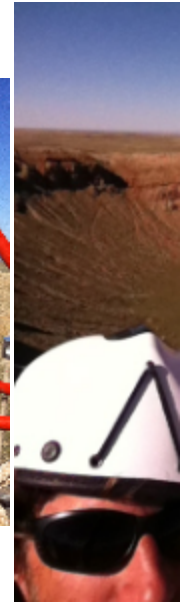
RIM dressed



RIM





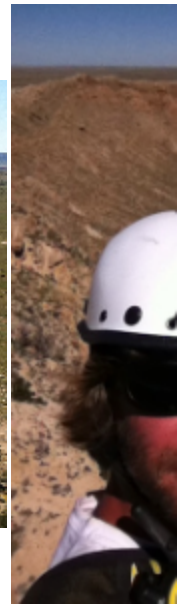


Scratched paint



Theodolite and RIM





Another view from RIM looking South-ish over mining village



Random shot of RIM tower looking at crater floor



Mining village from RIM, looking South-ish



View of West rim o



Showing Southeast from on RIM tower



Looking down from RIM tower (~110') at south anchor



Looking down at N

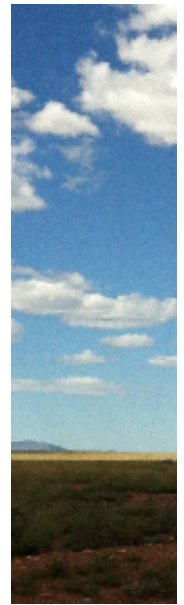




Looking SW from FLR



I believe this is NEAR tower



Shot of NEAR tower



View of FLR south



Set up of FLR



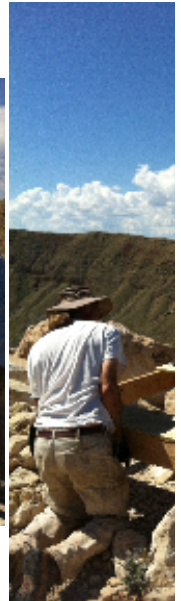
Anchors installed a



LIDAR set up



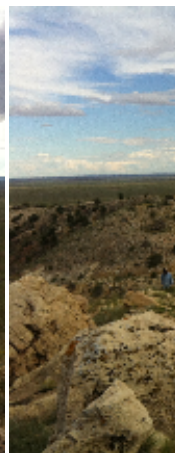
LIDAR set up w/ Kurt's wise cracks



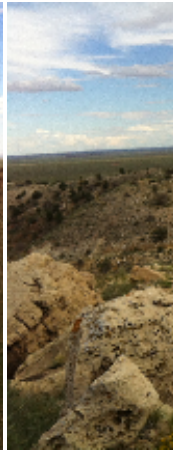
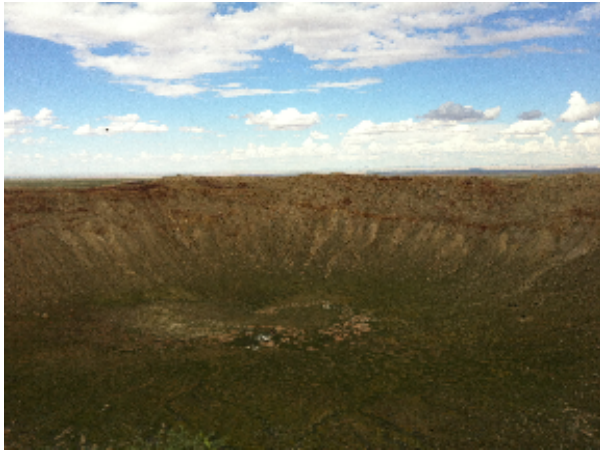
LIDAR set up



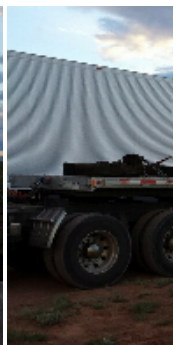
More views from LIDAR area



Shot from RIM to BASE



Showing the came



Rain at staging area (BASE)



Random shots of water at BASE



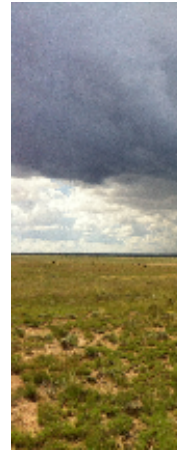
Showing water run



Mining building by RIM



Buildings by RIM



Storm to the South



Building the anchor baskets for RIM



Hotel in Flagstaff



NEAR site arrival



Anchors being inst