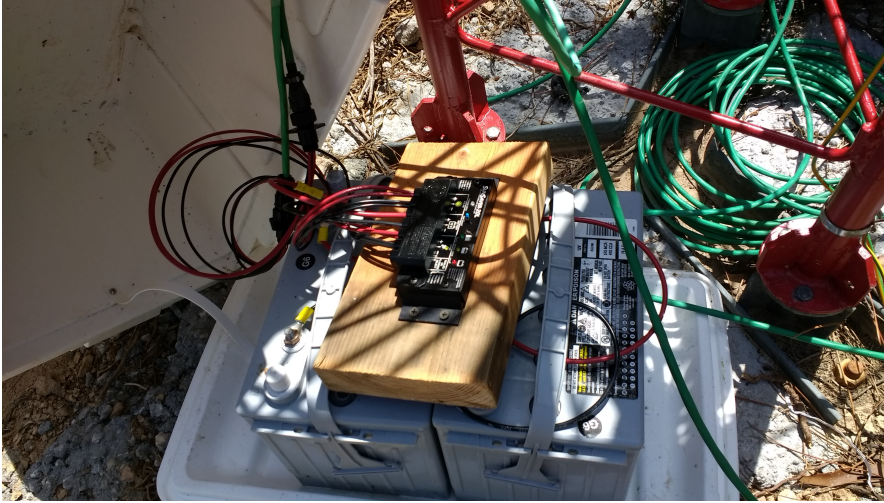


Battery cooler box inversions

In an effort to mitigate the problem of water in the battery boxes it's been decided to flip the box, mount the batteries and controller on the lid, and then use the box as the cover.



Tying off or looping the cables at the top with the controller will ensure they will always be well above the waterline for any that gets into the box. At this time towers tse05 and tse07 have been flipped.



Securing the box with a few rocks will be standard, and fortunately there's a few around to choose from.